

GLEBE, NSW
1308/1 Scotsman Street

2 BED **2** BATH **1** CAR 

Deposit Taken!

- This 91sqm, 3rd floor Apartment features:
Garden Facing 2-Bedroom Apartment near Tramsheds
- Large bedrooms with floor to ceiling built-in wardrobe
 - Open-plan living and dining area flowing onto balcony
 - Modern kitchen with stone benchtop and Miele appliances
 - Sleek bathrooms with vanity storage
 - Sunny balcony facing the internal gardens
 - Internal laundry with washing machine and dryer included
 - Secure car space and storage cage included
 - Ducted A/C, video intercom and NBN connectivity
 - 450m to the Tramsheds, light rail station and public transport

Deposit Taken!

Contact: Naz Sabzpouri
02 8588 8888
0401 545 440

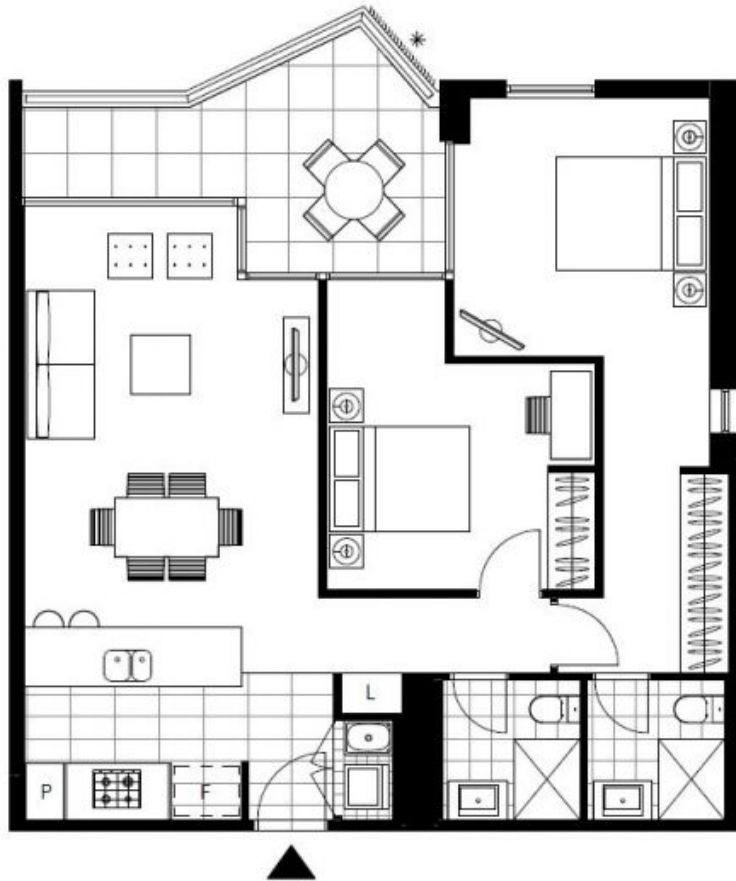
Type: Apartment

Date Available: 16/01/2021

Bond: \$2800

<https://www.resbymirvac.com>

For more information, please contact Real Estate Services by Mirvac on 02 8588 8888 or email enquiries@resbymirvac.com - Your Onsite Agent!



LEVEL 3

Plans shown are only indicative of layout. Dimensions are approximate.

GLEBE, NSW
1308/1 Scotsman Street