



ZETLAND, NSW

1005/18 Ebsworth Street

1
BED

1
BATH



Top Floor 1-Bedroom Apartment in Zetland with views of Botany Bay!

This 49sqm, Level 10 Apartment offers;

- Modern kitchen with stone benchtop and Smeg appliances
- Well-appointed bedroom with built-in wardrobe
- Tiled, combined living and dining area
- Sleek bathroom with plenty of storage
- Internal laundry with dryer included
- Secure basement storage cage included
- Ducted A/C, video intercom and NBN connectivity
- 300m to Woolworths, Green Square Train Station (10mins to the City) and Green Square Library

DEPOSIT TAKEN - FIRST INSPECTION!

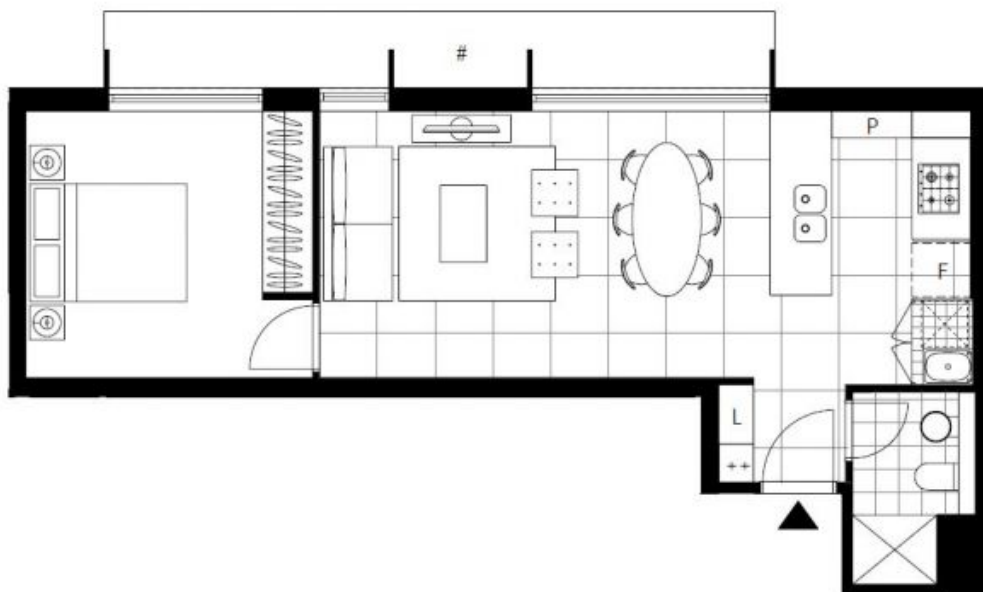
Contact: Carmen Whiteley
02 8588 8888
0497 555 519

Type: Apartment

Date Available: 29/12/2020

Bond: \$1980

<https://www.resbymirvac.com>



Plans shown are only indicative of layout. Dimensions are approximate.

ZETLAND, NSW
1005/18 Ebsworth Street