



DONCASTER, VIC
16 Stables Circuit

4 BED **3** BATH **2** CAR



Brand New Tullamore Luxury

Set in an incredibly convenient location, you will revel in being so close to Doncaster Shopping Town, the Eastern Freeway, accessible public transport and Doncaster's 'Park and Ride'. Awash with natural light, this BRAND NEW home set over three levels consists of an open plan living/dining area adjoining the deluxe, well-appointed kitchen with central island bench.

\$720 Per Week

Contact: Property Management

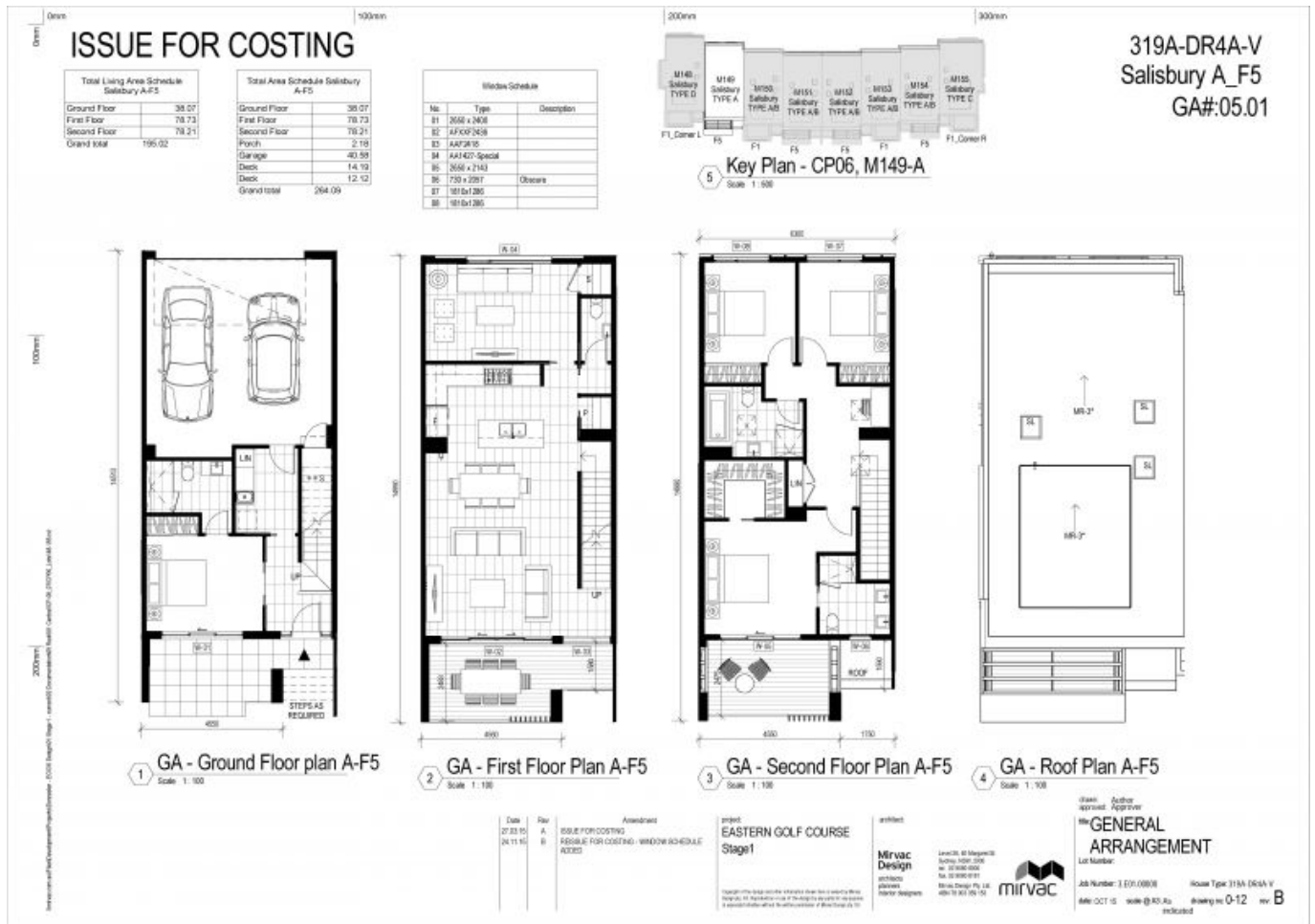
Type: ~~0394611689~~

Date Available: 25/09/2017

Bond: \$4320

<https://www.resbymirvac.com>

This truly is a model of stylish, elegant, and relaxed living within Mirvac's newest community, Tullamore.



Plans shown are only indicative of layout. Dimensions are approximate.

DONCASTER, VIC

16 Stables Circuit