



DONCASTER, VIC

16 Stables Circuit

4
BED

3
BATH

2
CAR



Brand New Tullamore Luxury

Set in an incredibly convenient location, you will revel in being so close to Doncaster Shopping Town, the Eastern Freeway, accessible public transport and Doncaster's 'Park and Ride'. Awash with natural light, this BRAND NEW home set over three levels consists of an open plan living/dining area adjoining the deluxe, well-appointed kitchen with central island bench.

This truly is a model of stylish, elegant, and relaxed living within Mirvac's newest community, Tullamore.

\$720 Per Week

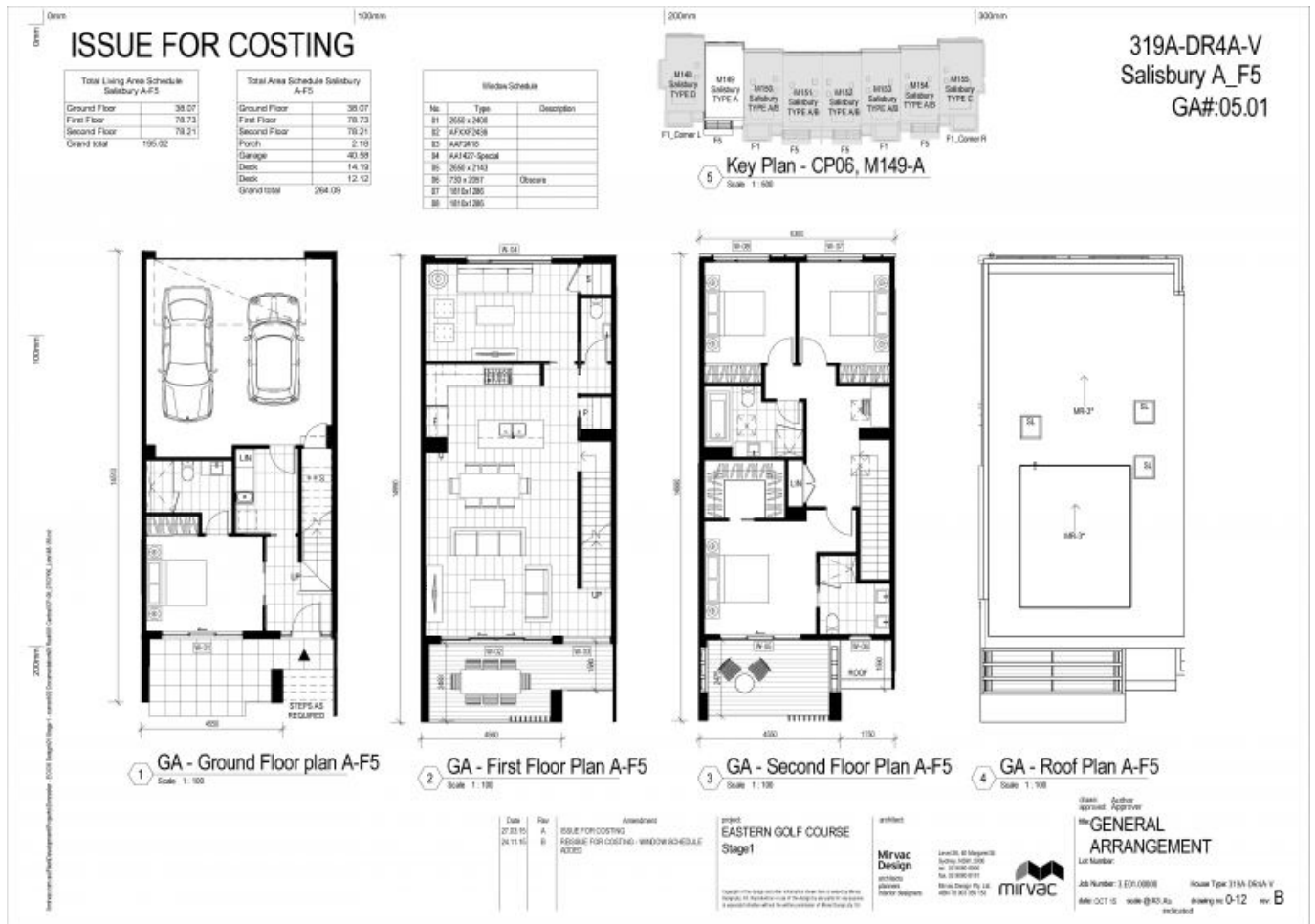
Contact: Property Management

Type: ~~0396451689~~ **0396451689**

Date Available: 25/09/2017

Bond: \$4320

<https://www.resbymirvac.com>



Plans shown are only indicative of layout. Dimensions are approximate.

DONCASTER, VIC
16 Stables Circuit