



DONCASTER, VIC

5 Phar Lap Drive

2 BED **2** BATH **1** CAR 

STYLISH, SOPHISTICATED & BRAND NEW

Located in the exclusive Tullamore Estate, what was previously the Eastern Golf Course, this brand new townhouse exudes architectural sophistication inside and out. Set over two floors, it is cleverly configured with the car accommodation and living options on the entry level and the sleeping quarters zoned upstairs.

Features include two robed bedrooms and two bathrooms, a European laundry and powder room plus a host of premium inclusions such as heating/cooling, high quality stone benches and stainless-steel kitchen appliances. A private courtyard adds appeal with ample space for relaxation or entertaining.

For buyers and investors, the position will also impress with the Estate well-located near Westfield, the Eastern Freeway, Birralee Primary School and Koonung Secondary College.

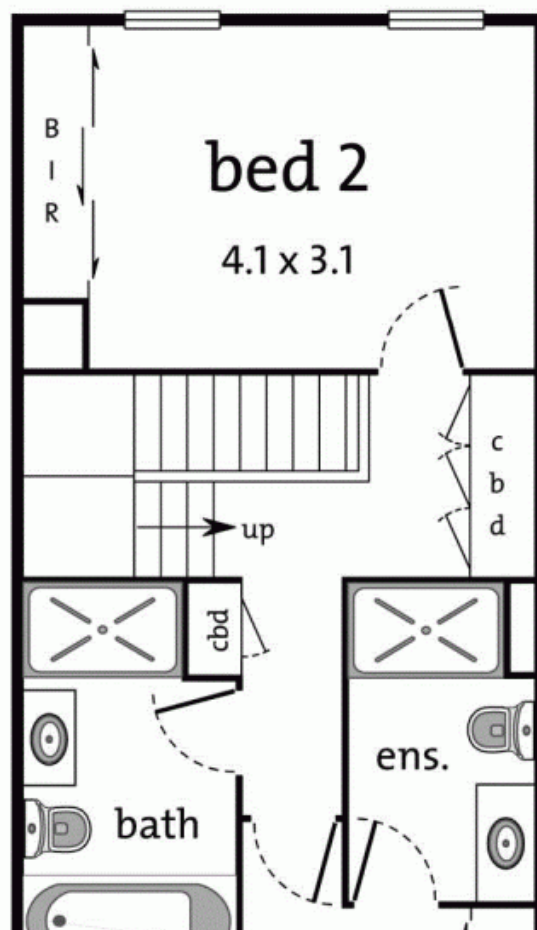
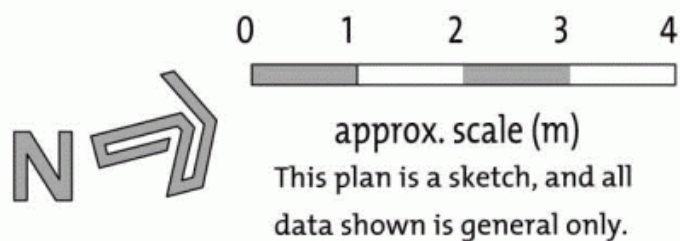
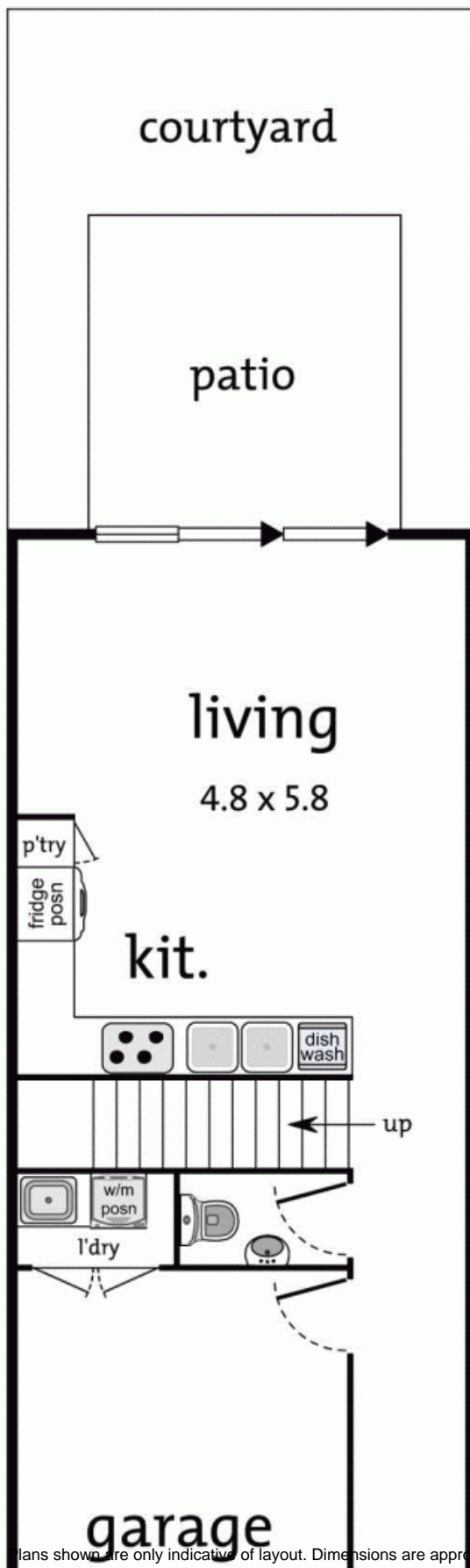
\$690,000 - \$750,000

Contact: Baden Lucas
03 9645 1199
0418 888 751

Type: Townhouse

Sold Date: 14/10/2017

<https://www.resbymirvac.com>



Plans shown are only indicative of layout. Dimensions are approximate.

DONCASTER, VIC
5 Phar Lap Drive