



ZETLAND, NSW
210/18 Ebsworth Street

3 BED **2** BATH **2** CAR 

Large 3-Bedroom Apartment with Courtyard and Two Carspaces!

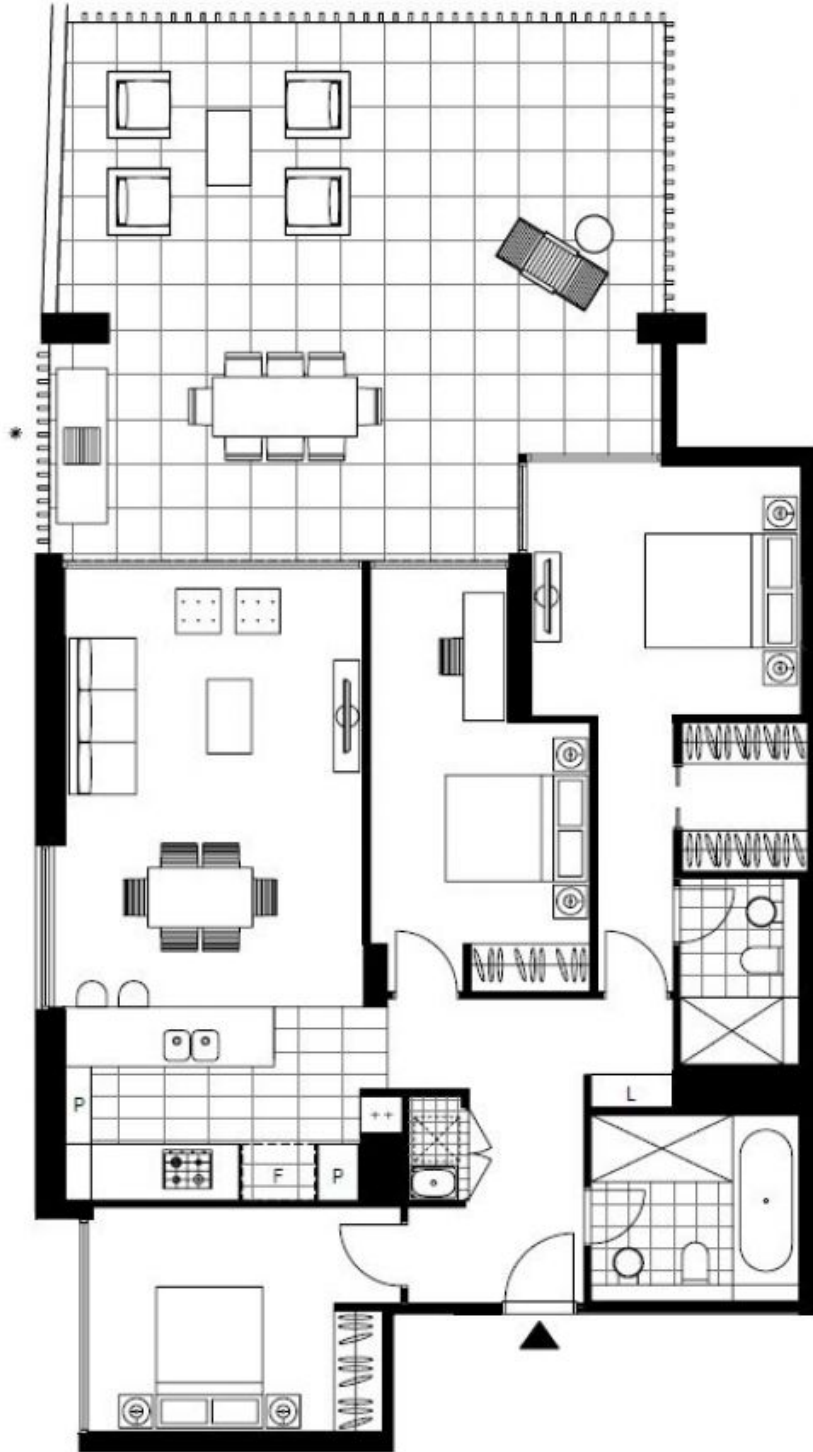
This 163sqm, East-facing 3-Bedroom Apartment features;

- Modern kitchen with stone benchtops and Smeg appliances
- Well-appointed bedrooms with floor to ceiling built-in wardrobes
- Sleek bathrooms, ensuite off master bedroom and bath in main
- Large courtyard with access from living area and master bedroom
- Internal laundry with dryer included
- Two carspaces and one storage cage included
- Ducted A/C, video intercom and NBN connectivity
- Green Square Train Station and Library, Woolworths and The Social Corner all within 300m

DEPOSIT TAKEN

Contact: Georgia Glynn
02 8588 8888
0481 388 777
Carmen Whiteley
02 8588 8888
0497 555 519

Type: Apartment
Date Available: 10/10/2018
Bond: \$5400
<https://www.resbymirvac.com>



Plans shown are only indicative of layout. Dimensions are approximate.

ZETLAND, NSW
210/18 Ebsworth Street