



GLEBE, NSW

116/6 Maxwell Road

1
BED

1
BATH



Deposit Taken!

This 79sqm, 1-Bedroom Apartment features:
Rare Large 1-Bedroom Apartment with Courtyard in Harold Park

- Large bedroom with generous built-in wardrobe
- Open-plan living and dining area
- Modern kitchen with stone benchtop and Miele appliances
- Large entertainer's courtyard with access from living area
- Sleek bathroom with plenty of storage
- Internal laundry with a dryer included
- Secure storage cage included
- Ducted A/C, video intercom and NBN connectivity
- 150m to the Heritage-listed Tramsheds, light rail station and public transport

Deposit Taken

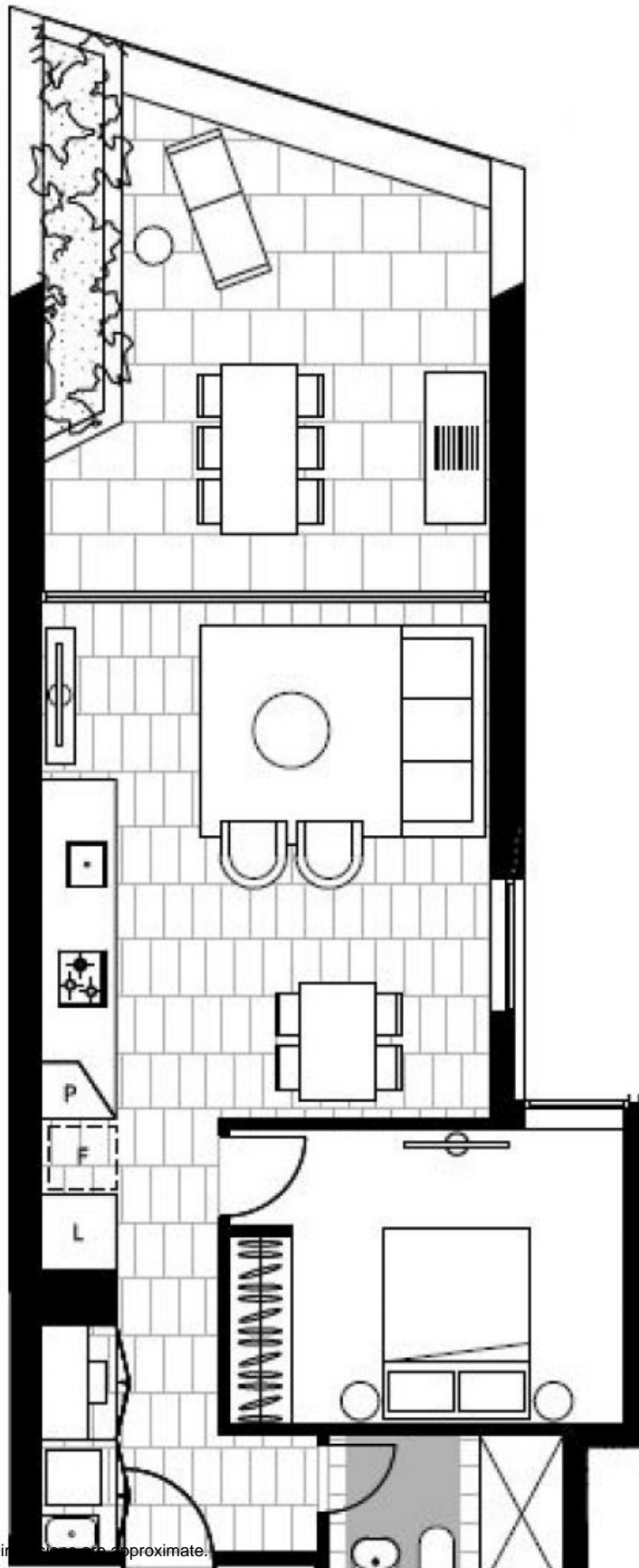
Contact: Naz Sabzpouri
02 8588 8888
0401 545 440

Type: Apartment

Date Available: 01/04/2020

Bond: \$2480

<https://www.resbymirvac.com>



Plans shown are only indicative of layout. Dimensions are approximate.

GLEBE, NSW
116/6 Maxwell Road

LEVEL 1