

## GLEBE, NSW

116/6 Maxwell Road

**1**  
BED

**1**  
BATH



### Deposit Taken!

This 79sqm, 1-Bedroom Apartment features:

Rare Large 1-Bedroom Apartment with Courtyard in Harold Park

- Large bedroom with generous built-in wardrobe
- Open-plan living and dining area
- Modern kitchen with stone benchtop and Miele appliances
- Large entertainer's courtyard with access from living area
- Sleek bathroom with plenty of storage
- Internal laundry with a dryer included
- Secure storage cage included
- Ducted A/C, video intercom and NBN connectivity
- 150m to the Heritage-listed Tramsheds, light rail station and public transport

### Deposit Taken

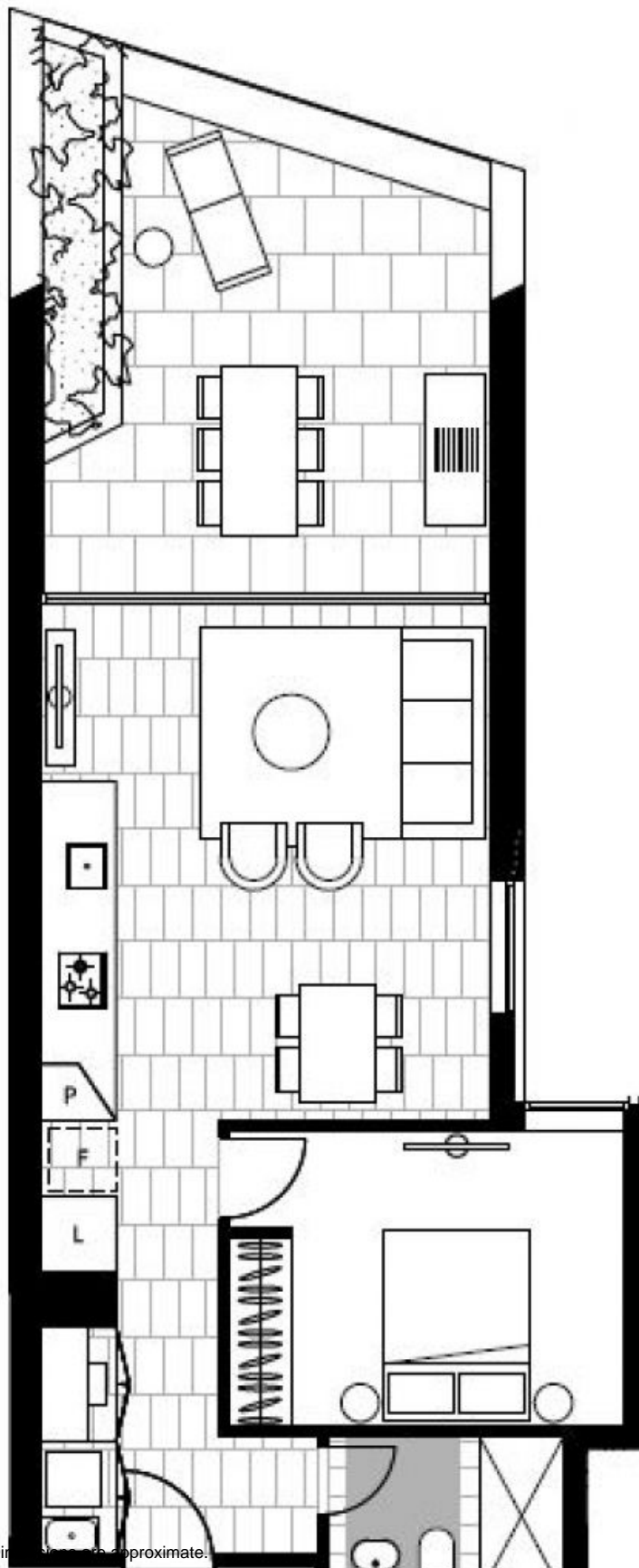
**Contact:** Naz Sabzpouri  
02 8588 8888  
0401 545 440

**Type:** Apartment

**Date Available:** 01/04/2020

**Bond:** \$2480

<https://www.resbymirvac.com>



Plans shown are only indicative of layout. Dimensions are approximate.

**GLEBE, NSW**  
116/6 Maxwell Road

LEVEL 1