



GLEBE, NSW
511/19 Minogue Crescent

2 BED **2** BATH **1** CAR



Deposit Taken!

- This Premium, 112sqm Apartment offers;
 Deposit taken- More apartments available- Call Harry 0401 545 440
- Modern kitchen with stone benchtop and integrated Miele appliances
 - Well-appointed bedrooms with built-in wardrobes
 - Sleek bathroom with plenty of storage, bath in ensuite
 - Sunny North-East facing entertainers' balcony with access from living area
 - Second balcony accessible from the master bedroom
 - Study nook off bedroom, perfect for a home office
 - Internal laundry with washing machine and dryer included
 - Secure carspace and storage cage included
 - Ducted A/C, video intercom and NBN connectivity
 - Walking distance to buses, the light rail and the Tramsheds

DEPOSIT TAKEN !

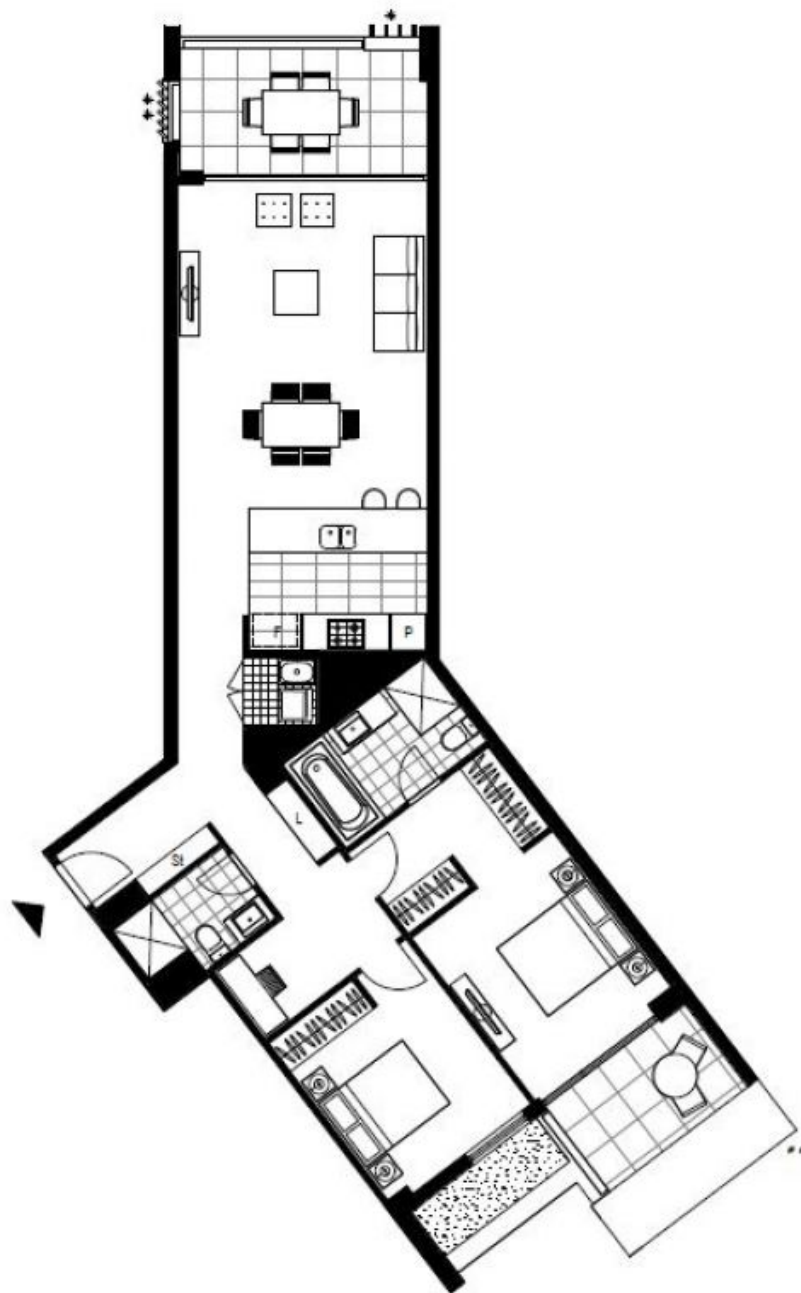
Contact: Naz Sabzpouri
 02 8588 8888
 0401 545 440

Type: Apartment

Date Available: 04/01/2020

Bond: \$3000

<https://www.resbymirvac.com>



Plans shown are only indicative of layout. Dimensions are approximate.

GLEBE, NSW
511/19 Minogue Crescent