



**GLEBE, NSW**  
511/19 Minogue Crescent

**2** BED   **2** BATH   **1** CAR



**Deposit Taken!**

- This Premium, 112sqm Apartment offers;  
 Deposit taken- More apartments available- Call Harry 0401 545 440
- Modern kitchen with stone benchtop and integrated Miele appliances
  - Well-appointed bedrooms with built-in wardrobes
  - Sleek bathroom with plenty of storage, bath in ensuite
  - Sunny North-East facing entertainers' balcony with access from living area
  - Second balcony accessible from the master bedroom
  - Study nook off bedroom, perfect for a home office
  - Internal laundry with washing machine and dryer included
  - Secure carspace and storage cage included
  - Ducted A/C, video intercom and NBN connectivity
  - Walking distance to buses, the light rail and the Tramsheds

**DEPOSIT TAKEN !**

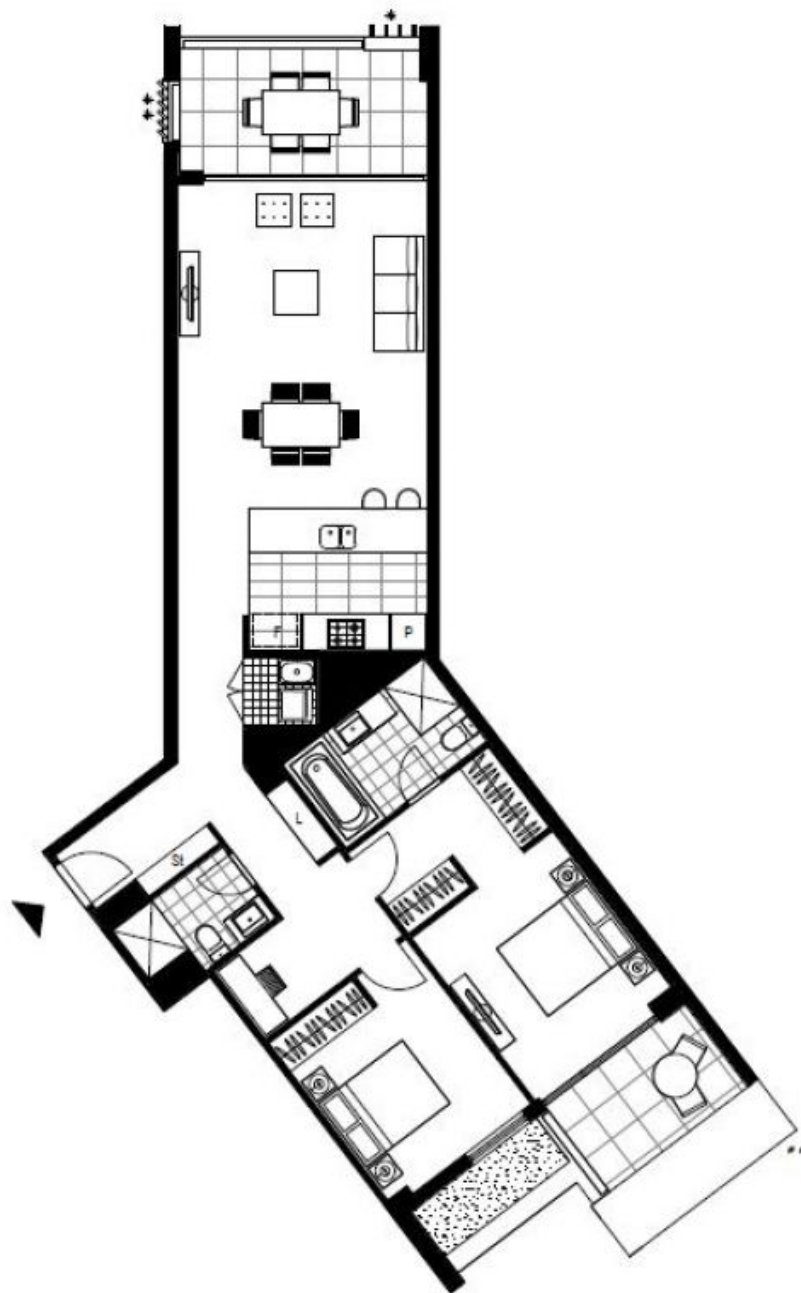
**Contact:** Naz Sabzpouri  
 02 8588 8888  
 0401 545 440

**Type:** Apartment

**Date Available:** 04/01/2020

**Bond:** \$3000

<https://www.resbymirvac.com>



Plans shown are only indicative of layout. Dimensions are approximate.

**GLEBE, NSW**  
511/19 Minogue Crescent