



ZETLAND, NSW

303/18 Ebsworth Street

1 BED **1** BATH **1** CAR 

Studio Apartment with Parking in Green Square

This large 66sqm Studio Apartment offers;

- Well-appointed bedroom area with built-in wardrobe and sliding partition doors
- Modern kitchen with stone benchtop and Miele appliances
- Sleek bathroom with plenty of storage
- Large west facing balcony with access from living area
- Internal laundry with dryer included
- Secure car space AND basement storage cage
- Walking distance to Green Square train station, Woolworths and cafes

For more information, please contact Real Estate Services by Mirvac on 02 8588 8888

DEPOSIT TAKEN

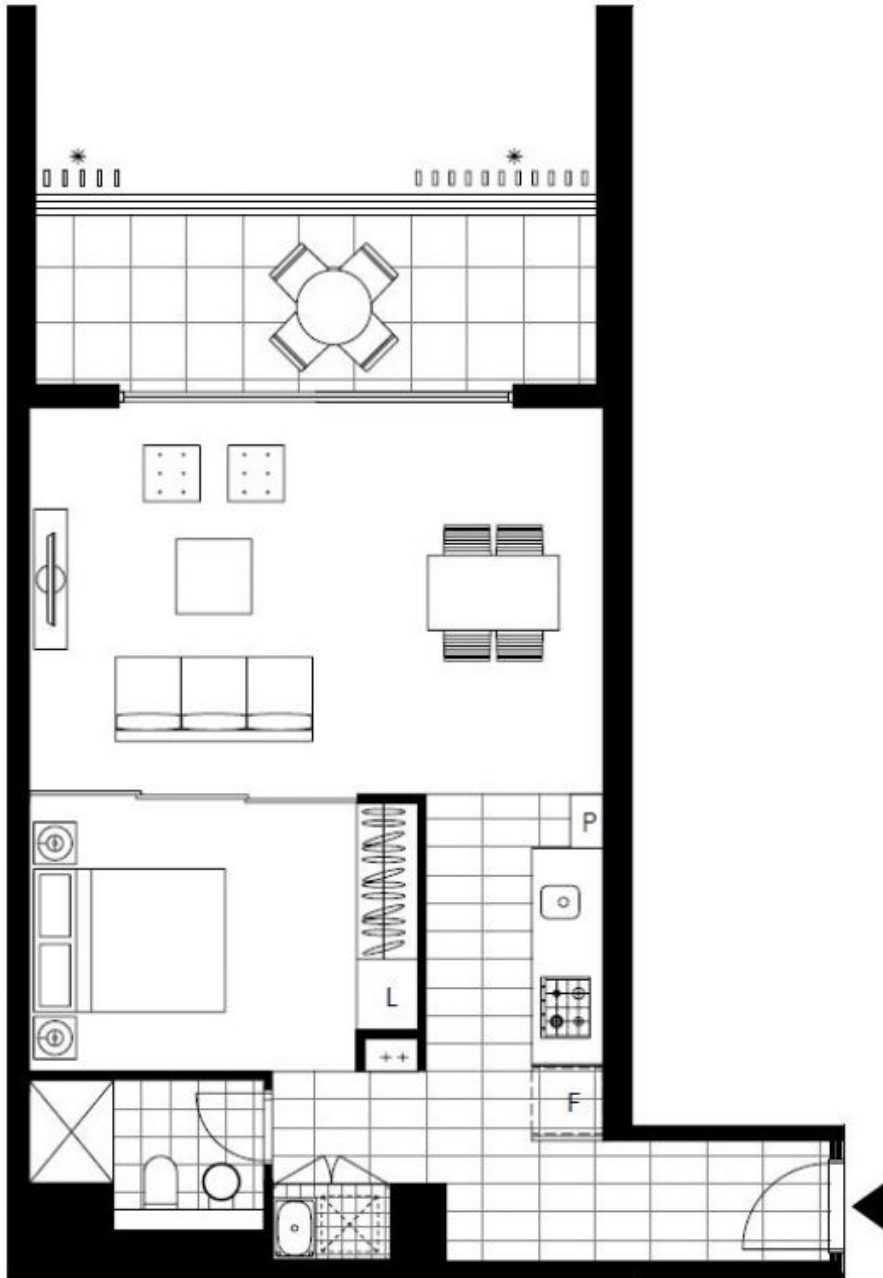
Contact: Georgia Glynn
02 8588 8888
0481 388 777
Carmen Whiteley
02 8588 8888
0497 555 519

Type: Apartment

Date Available: 18/09/2017

Bond: \$2600

<https://www.resbymirvac.com>



Plans shown are only indicative of layout. Dimensions are approximate.

ZETLAND, NSW
303/18 Ebsworth Street