



ZETLAND, NSW
401/18 Ebsworth Street

2 BED	2 BATH	1 CAR	
-----------------	------------------	-----------------	---

OPEN HOUSE 26th AUGUST CANCELLED

Real Estate Service by Mirvac are offering for sale this NEWLY COMPLETED 2 bedroom apartment located in "Ebsworth" forming part of Stage 1 within Mirvac's Green Square precinct.

Positioned on Level 4, this well presented, Mirvac developed, north facing apartment offers:

- 2 bedrooms,
- 2 bathrooms,
- Open living and dining area,
- Large Balcony, accessed via lounge and main bedroom
- Completed in February 2017

Green Square offers you the on site convenience of Woolworths, BWS and Mirvac's onsite office and cafe "The Social Corner". The building is located within 100m walk to Green Square station and bus routes to Sydney CBD and the Eastern Suburbs.

\$1,179,000

Council Rates: \$985/year (approx)

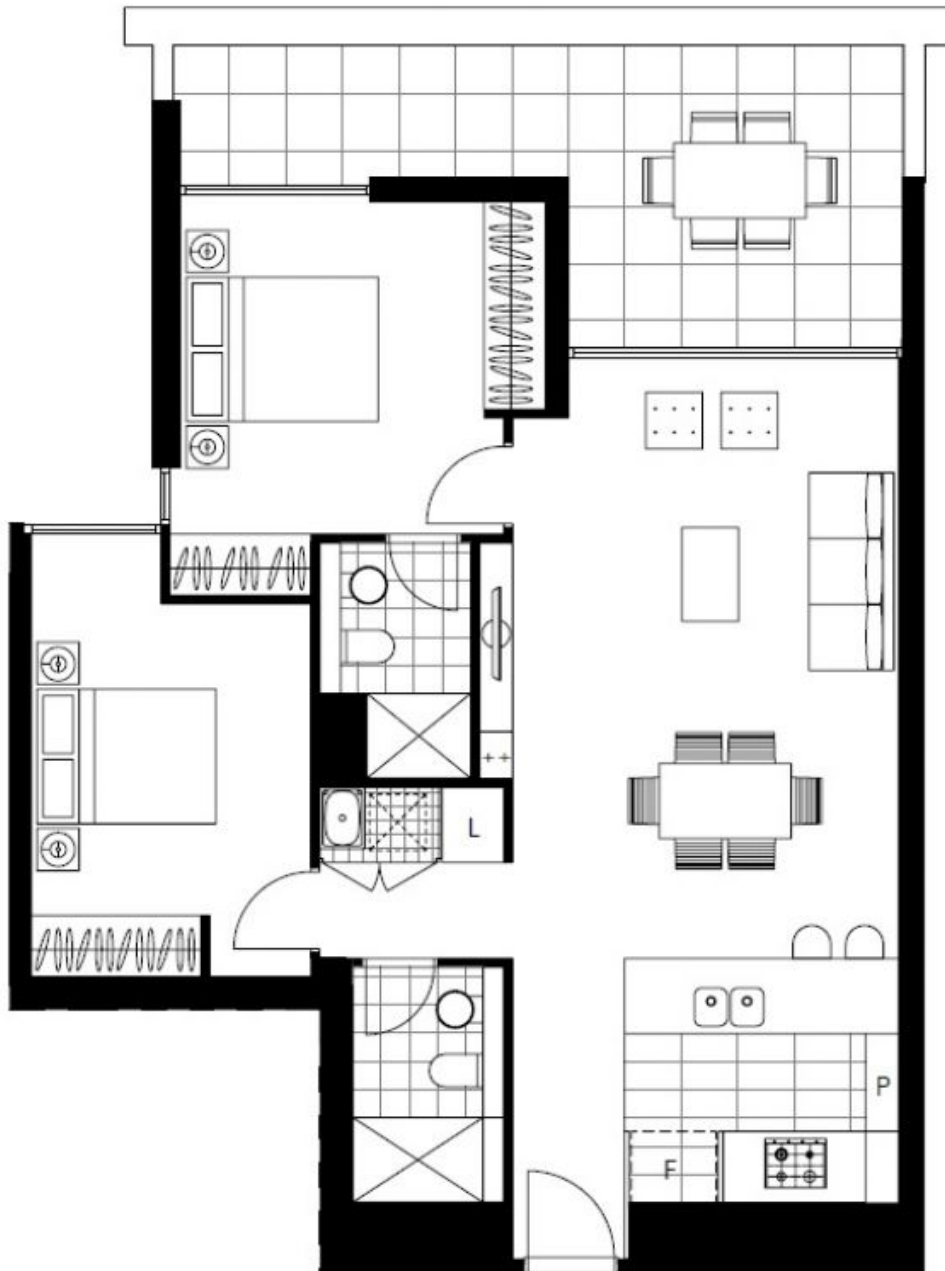
Strata Rates: \$4,840/year (approx)

Contact: Matthew Matthews
02 8588 8888
0418 266 590

Type: Apartment

Sold Date: 25/08/2017

<https://www.resbymirvac.com>



Plans shown are only indicative of layout. Dimensions are approximate.

ZETLAND, NSW
401/18 Ebsworth Street