

ZETLAND, NSW

710/28 Ebsworth Street

2 BED **2** BATH **1** CAR 

Oversized 2-Bedroom Apartment with Parking in Zetland

This 114sqm, 7th floor Apartment features:

- Well-appointed bedrooms with generous built-in wardrobes
- Walk-in robe and ensuite in master bedroom
- Open-plan living and dining area
- Sleek bathrooms with plenty of vanity storage, bath in main
- Contemporary kitchen with stone benchtops and Smeg appliances
- North-East facing balcony with city views
- Internal laundry with dryer included
- Concealed study nook with built-in desk
- Secure car space and storage cage included
- Ducted A/C, video intercom and NBN connectivity

Under Offer

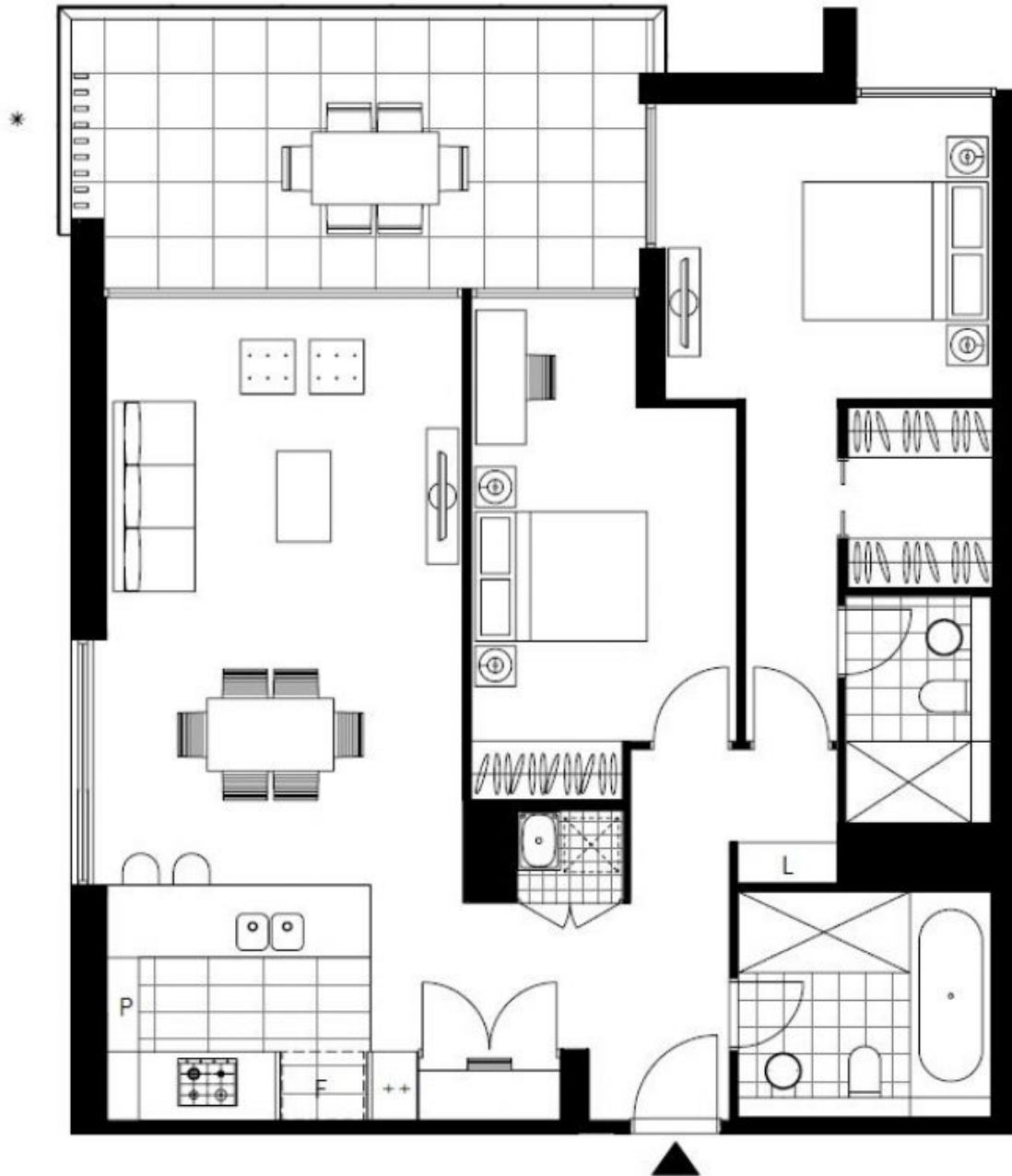
Contact: Matthew Matthews
02 8588 8888
0418 266 590

Type: Apartment

Date Available: 23/11/2019

Sold Date: 25/09/2020

<https://www.resbymirvac.com>



Plans shown are only indicative of layout. Dimensions are approximate.

ZETLAND, NSW
710/28 Ebsworth Street