



GLEBE, NSW

2601/7 Scotsman Street

1
BED

1
BATH



DEPOSIT TAKEN!

This 53sqm, 6th Floor apartment features:

Stunning 1-Bedroom Apartment in Harold Park

- Large bedroom with generous built-in wardrobe and direct balcony access
- Tiled living and dining area, leading to the balcony
- Modern kitchen with stone benchtop and Miele appliances
- Sleek bathroom with plenty of vanity storage
- North East-facing balcony, overlooking the internal gardens
- Internal laundry with washing machine and dryer included
- Secure storage cage included
- Ducted Air conditioning, video intercom and NBN connectivity
- 500m to the Tramsheds, light rail station and public transport

DEPOSIT TAKEN

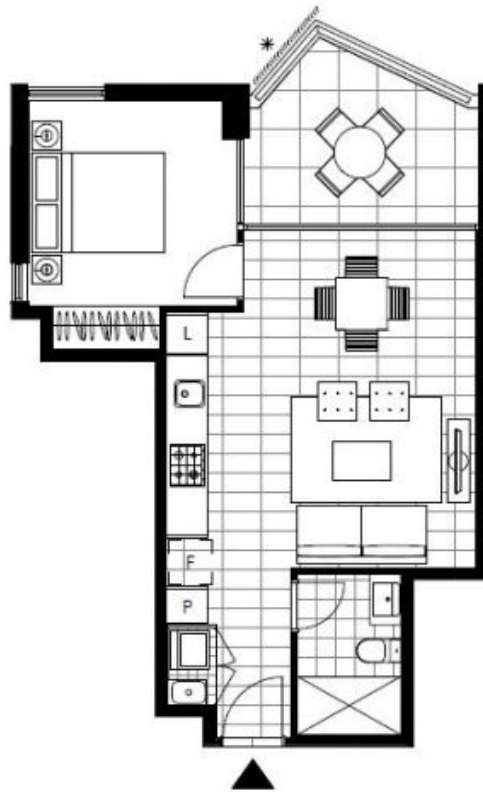
Contact: Matthew Matthews
02 8588 8888
0418 266 590
Naz Sabzpouri
02 8588 8888
0401 545 440

Type: Apartment

Date Available: 15/06/2019

Bond: \$2200

<https://www.resbymirvac.com>



LEVEL 4, 5, 6

Plans shown are only indicative of layout. Dimensions are approximate.

GLEBE, NSW
2601/7 Scotsman Street