

ZETLAND, NSW

311/18 Ebsworth Street

2 **2** **1** 
BED BATH CAR

2-Bedroom Apartment with City views in Ebsworth

This 92sqm, level 3 apartment features;

- Modern kitchen with stone bench tops and Miele appliances
- Large bedrooms with floor to ceiling built-ins
- Internal laundry with Fisher and Paykel dryer included
- Secure parking in basement with separate storage cage
- Large balcony flowing on from living area

****images indicative only****

Contact our team from Real Estate Services by Mirvac on 02 8588 8888 today!

DEPOSIT TAKEN

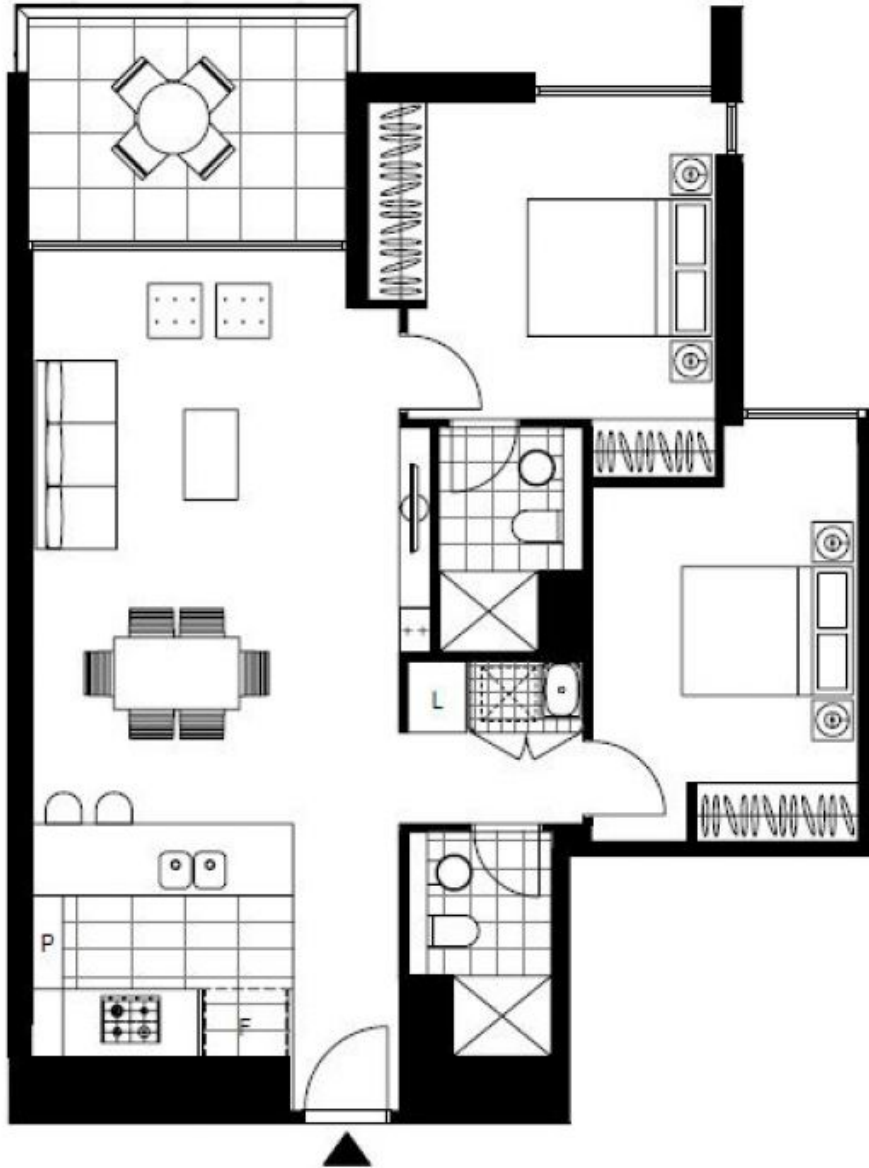
Contact: Matthew Matthews
02 8588 8888
0418 266 590

Type: Apartment

Date Available: 04/08/2017

Bond: \$3200

<https://www.resbymirvac.com>



Plans shown are only indicative of layout. Dimensions are approximate.

ZETLAND, NSW
311/18 Ebsworth Street