



## DOCKLANDS, VIC

2305/81 South Wharf Drive

2  
BED

2  
BATH

1  
CAR

RES

### Brand New River Side Luxury

Forge is Melbourne's newest luxury waterfront address, be the first to enjoy this two bedroom apartment in the prestigious Yarra's Edge precinct.

Next generation interiors feature gourmet kitchens complemented by European appliances, including dishwasher, and designer bathrooms finessed with chic fittings and luxe matt and metallic finishes. Expansive glazing, and balconies create light-filled living environments and sweeping vistas of the city, the Yarra River, the Bolte Bridge and Port Phillip Bay.

Forge residents will enjoy spaces that extend their personal living environment. A private dining room and cinema can be reserved by residents who want to elevate their gathering with plush surrounds and cityscape views in addition to the luxurious state-of-the-art health and wellbeing facility 'Wharf Club' housed beneath an inclined grass roof. It will be complemented by a cafe overlooking the water as well as the Wharf's

Landing.

**\$680 Per Week**

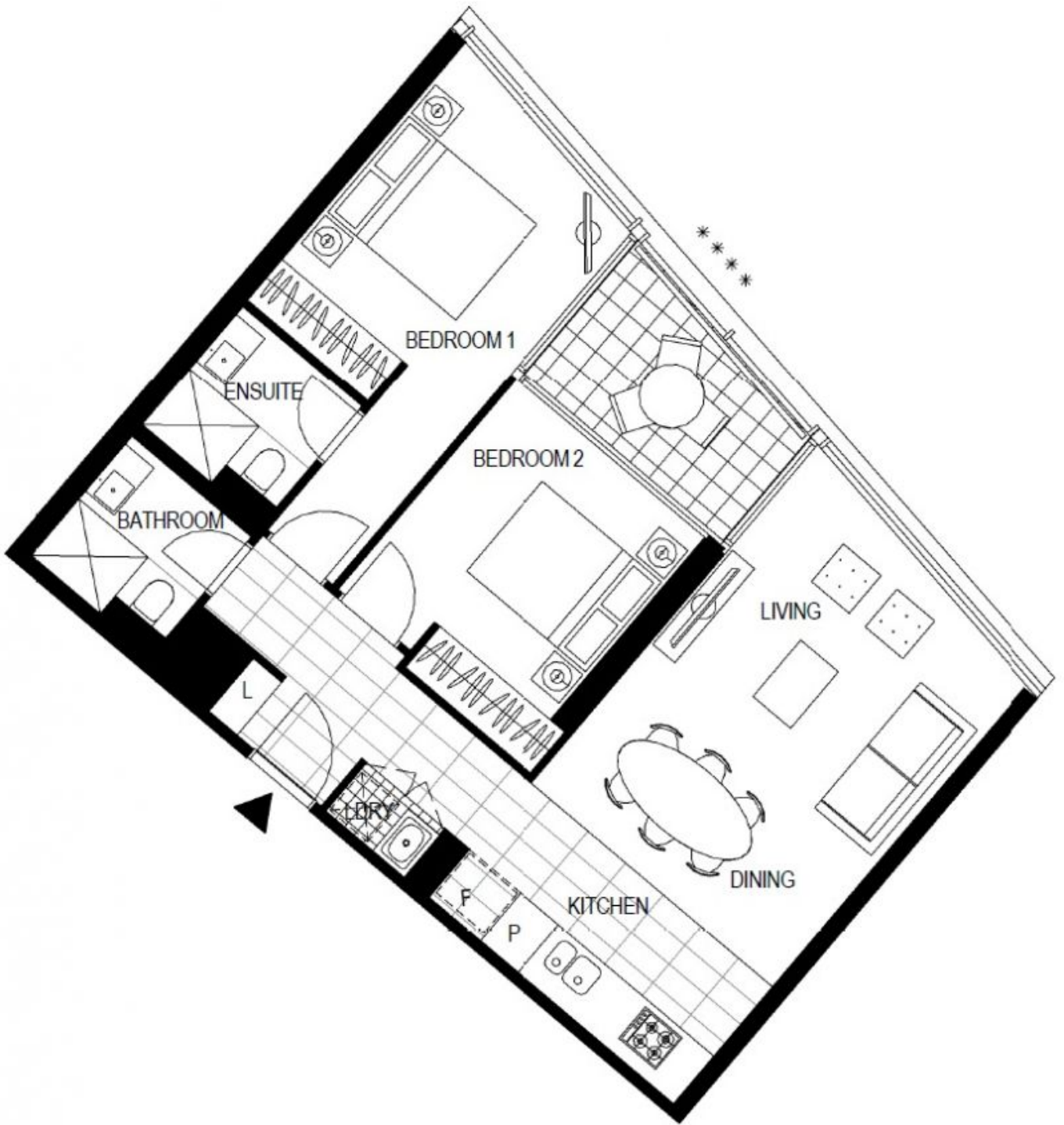
**Contact:** Baden Lucas  
03 9645 1199  
0418 888 751

**Type:** Apartment

**Date Available:** 21/07/2017

**Bond:** \$4080

**<https://www.resbymirvac.com>**



Plans shown are only indicative of layout. Dimensions are approximate.

**DOCKLANDS, VIC**  
2305/81 South Wharf Drive