

GLEBE, NSW
401/2 Scotsman Street

2 BED **2** BATH **1** CAR



Under offer in 5 days

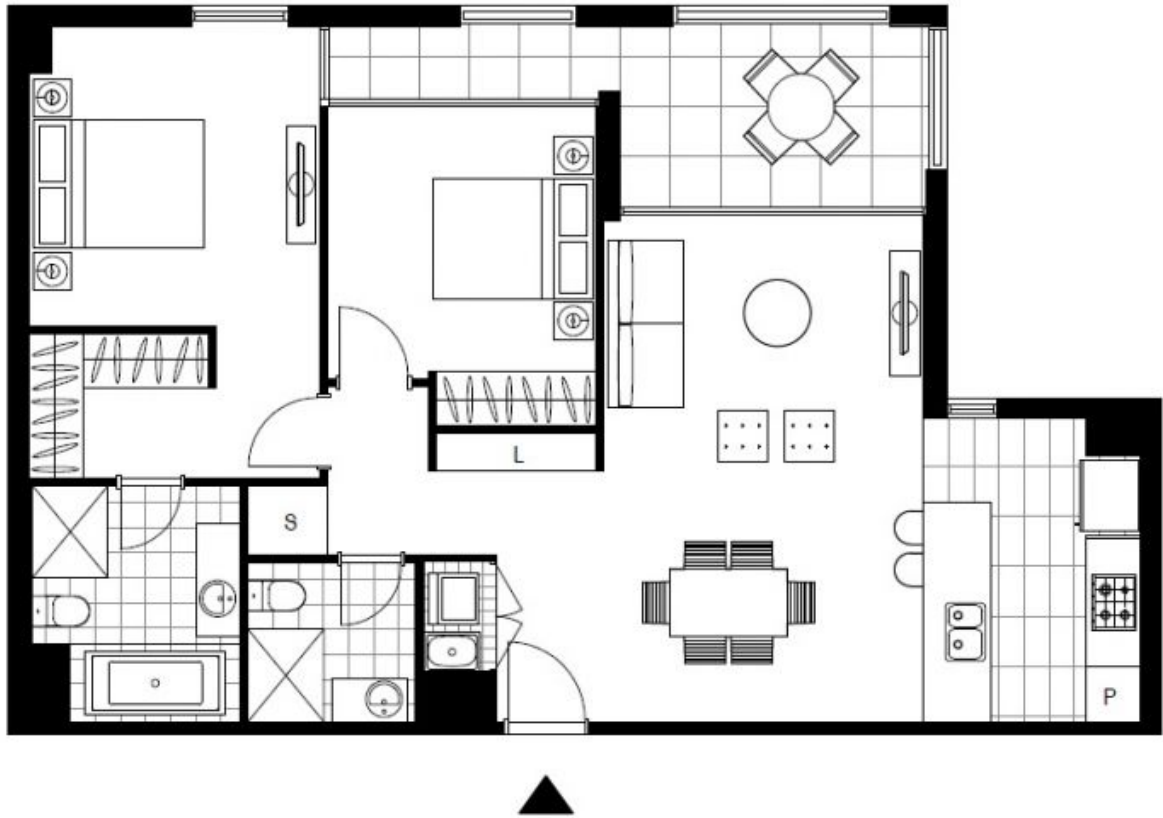
Immersed in the inner city, this flawless apartment is a match for its superb setting. Uplifting light illuminates the interiors which are positioned to look to a balcony gazing over landscaped gardens.

Step out of your front door and find coffee spots, green spaces and the city at your feet, delivering the perfect low maintenance investment or buy.

- • North-facing Mirvac build in a premier residential development
- • Stone kitchen with a streamlined aesthetic and stainless appliances
- • Generous bedrooms with ensuite in main, built-in wardrobe and alfresco flow
- • Sizeable balcony with glass sliders and pleasant green outlook
- • Compact laundry equipped with washing machine and dryer

Price Guide \$1,200,000

Council Rates: \$994/year (approx)
Strata Rates: \$4,771/year (approx)
Contact: Matthew Matthews
 02 8588 8888
 0418 266 590
Type: Apartment
Sold Date: 21/10/2020
<https://www.resbymirvac.com>



Plans shown are only indicative of layout. Dimensions are approximate.

GLEBE, NSW
401/2 Scotsman Street