



GLEBE, NSW
513/19 Minogue Crescent

1 BED **1** BATH



Prime Harold Park Location

This 58sqm, 1-Bedroom Apartment features:

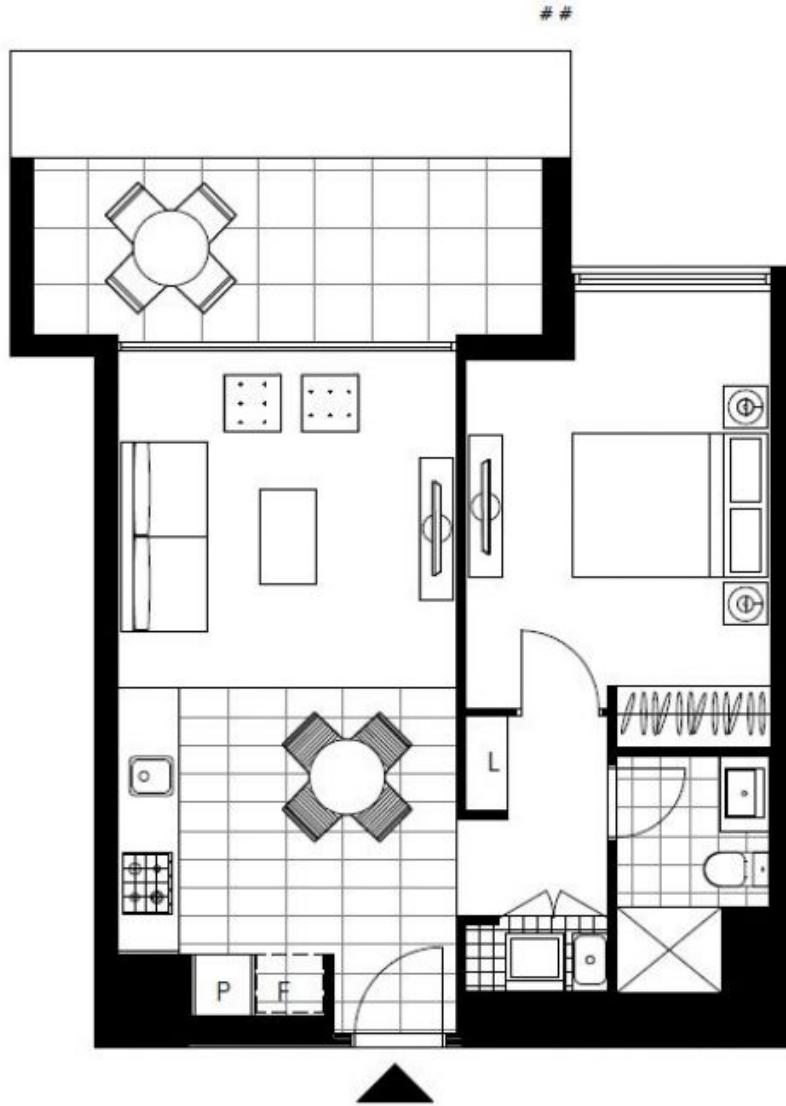
- Spacious bedroom with generous built-in
- Top floor of Altivolo with sky-light
- Galley style kitchen, stone benchtops & Miele appliances
- Sleek designer bathroom
- Internal laundry with washer and dryer INCLUDED
- Split cycle air conditioning
- Large West-facing balcony with leafy outlook
- Secure basement storage cage INCLUDED
- Located close to public transport and the Tramsheds

Contact Agent

Contact: Matthew Matthews
02 8588 8888
0418 266 590
Real Estate Sales By Mirvac
02 8588 8888
0481 702 370

Type: Apartment
Date Available: 21/07/2017
Sold Date: 14/07/2020
<https://www.resbymirvac.com>

Contact our team at Real Estate Services by Mirvac on 8588 8888 for more information today!



Plans shown are only indicative of layout. Dimensions are approximate.

GLEBE, NSW
513/19 Minogue Crescent