

BONDI, NSW

6207/32 Wellington Street

1
BED

1
BATH

1
CAR



West-facing, 1-Bedroom Apartment with Parking in The Moreton

This 48sqm, light-filled 1-Bedroom Apartment features;

- Large bedroom with built-in wardrobes
- Modern kitchen with stone benchtops and Miele appliances
- Sleek bathroom with hidden storage
- Private balcony with access from master and living
- Internal laundry with washer and dryer included
- Secure basement car space and motor bike space included
- Ducted A/C, video intercom and NBN connectivity
- Close to schools, transport and Bondi Beach (1.5km)

750

Contact:

Georgia Glynn
02 8588 8888
0481 388 777
Carmen Whiteley
02 8588 8888
0497 555 519

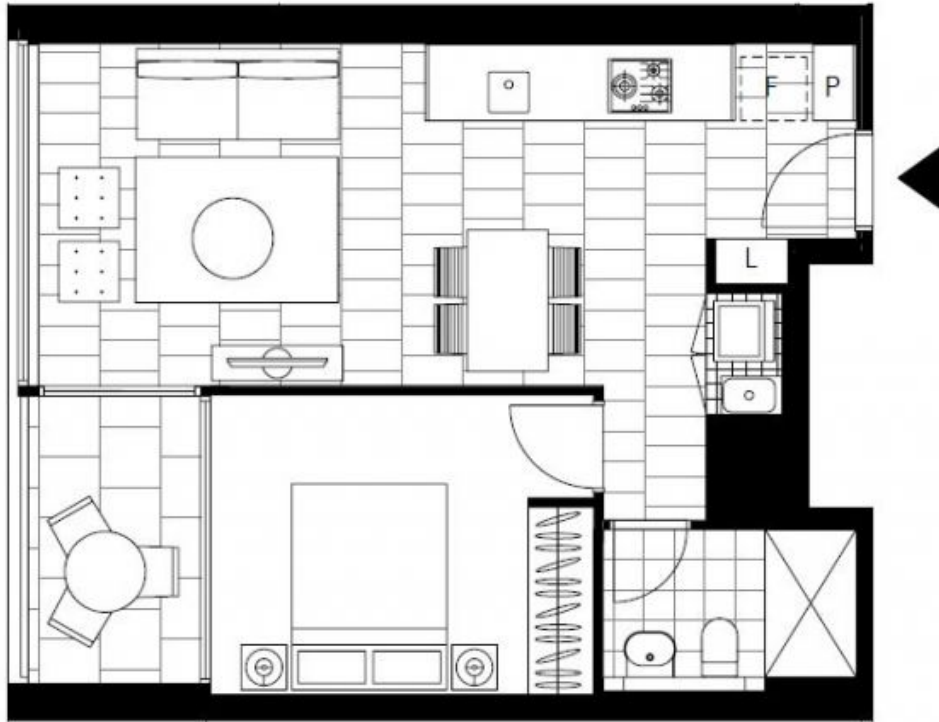
Type: Apartment

Date Available: 16/04/2018

Bond: \$3000

<https://www.resbymirvac.com>

For more information, please contact Real Estate Services by Mirvac on 02 8588 8888 or email enquiries@resbymirvac.com



Plans shown are only indicative of layout. Dimensions are approximate.

BONDI, NSW
6207/32 Wellington Street