



**GLEBE, NSW**  
5701/148 Ross Street

**1**  
BED

**1**  
BATH



**Deposit taken- More apartments available- Call Harry**  
**0401 545 440**

This 67sqm, 7th floor apartment features:

- Well appointed bedroom with floor-to-ceiling built-in wardrobe
- Open-plan living and dining area, with access to entertainers' balcony
- Quality kitchen with stone benchtop and built-in Miele appliances
- Modern bathroom with plenty of generous storage
- Internal laundry with washing machine and dryer included
- Study nook off bedroom, perfect for a home office
- Secure storage cage included
- Ducted A/C, video intercom and NBN connectivity
- 450m to the Heritage-listed Tramsheds, light rail and public transport

**DEPOSIT TAKEN !**

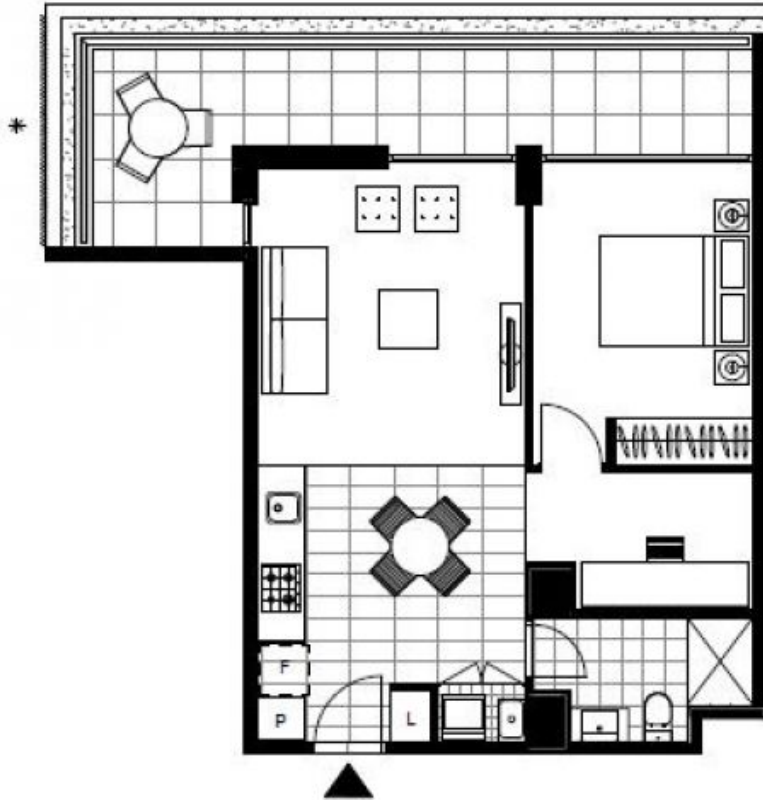
**Contact:** Naz Sabzpour  
02 8588 8888  
0401 545 440

**Type:** Apartment

**Date Available:** 27/02/2021

**Bond:** \$2200

**<https://www.resbymirvac.com>**



LEVEL 7

Plans shown are only indicative of layout. Dimensions are approximate.

**GLEBE, NSW**  
5701/148 Ross Street