



GLEBE, NSW

1201/1 Scotsman Street

2 BED **2** BATH **1** CAR 

Deposit Taken!

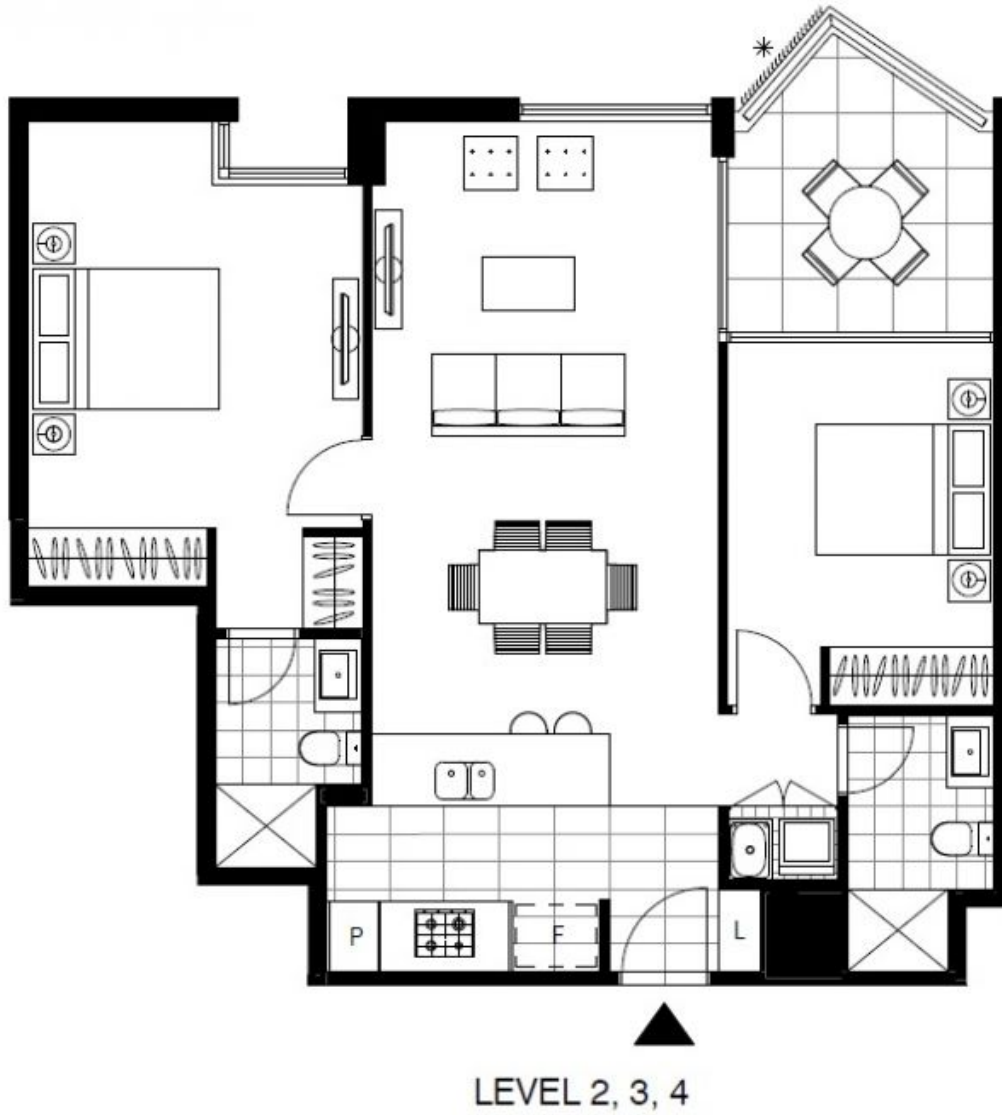
This 86sqm, 2nd floor Apartment features:
Bright 2-Bedroom Apartment in Harold Park

- Spacious bedrooms with generous built-in wardrobes
- Open-plan living and dining area, leading to the balcony
- Contemporary kitchen with stone benchtops and Miele appliances
- Sleek bathrooms with vanity storage
- Sunny balcony, perfect for entertaining
- Internal laundry with washer and dryer included
- Secure car space and storage cage included
- Ducted A/C, video intercom and NBN connectivity
- 350m to the Heritage-listed Tramsheds, light rail station and public transport

Deposit Taken

Contact: Matthew Matthews
02 8588 8888
0418 266 590
Stuart Nohra
02 8588 8888
0432 206 000

Type: Apartment
Date Available: 06/09/2019
Bond: \$3200
<https://www.resbymirvac.com>



Plans shown are only indicative of layout. Dimensions are approximate.

GLEBE, NSW
1201/1 Scotsman Street