



## GLEBE, NSW

6607/162 Ross Street

**2** BED **2** BATH **1** CAR 

### Deposit Taken!

This 109sqm, 6th floor Apartment features:

- Oversized 2-Bedroom Apartment in Harold Park
- Large bedrooms with generous built-in wardrobes
- Spacious living and dining area
- North East-facing balcony, perfect for entertaining
- Additional balcony from main bedroom
- Sleek bathrooms with vanity storage, bath in ensuite
- Contemporary kitchen with stone benchtops and Miele appliances
- Internal laundry with washer and dryer included
- Secure car space and storage cage included
- Ducted A/C, video intercom and NBN connectivity
- 260m to the Heritage-listed Tramsheds, light rail station and public transport

### Deposit Taken

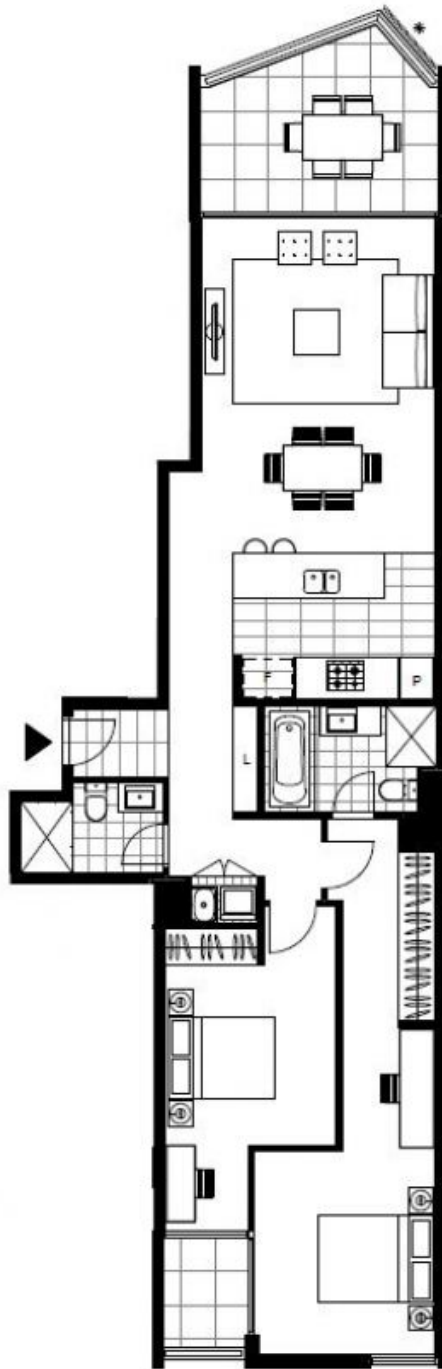
**Contact:** Matthew Matthews  
02 8588 8888  
0418 266 590  
Naz Sabzpouri  
02 8588 8888  
0401 545 440

**Type:** Apartment

**Date Available:** 17/08/2019

**Bond:** \$3360

<https://www.resbymirvac.com>



Plans shown are only indicative of layout. Dimensions are approximate.

**GLEBE, NSW**  
6607/162 Ross Street