



## DOCKLANDS, VIC

2005/60 Lorimer Street

1 BED 1 BATH 1 CAR RES

### Breathtaking Penthouse Views and Modern Flair

Checking off all the things you're looking for in a luxury Docklands apartment including chic and elegant style, marina views and a stunning location in the Yarra's Edge precinct, this north-facing Penthouse is simply perfect.

This impressive riverside pad is an ideal choice for city workers, keen owner-occupiers or those looking for an investment property. The apartment is located in the highly desirable Yarra's Edge hub and presents a spacious central living and dining zone which opens through sliding floor-to-ceiling windows to a tiled undercover balcony where you will be charmed by views of the bordering marina. Back inside, the contemporary kitchen enjoys a sleek black colour scheme and features stainless steel appliances.

**\$570,000 - \$610,000**

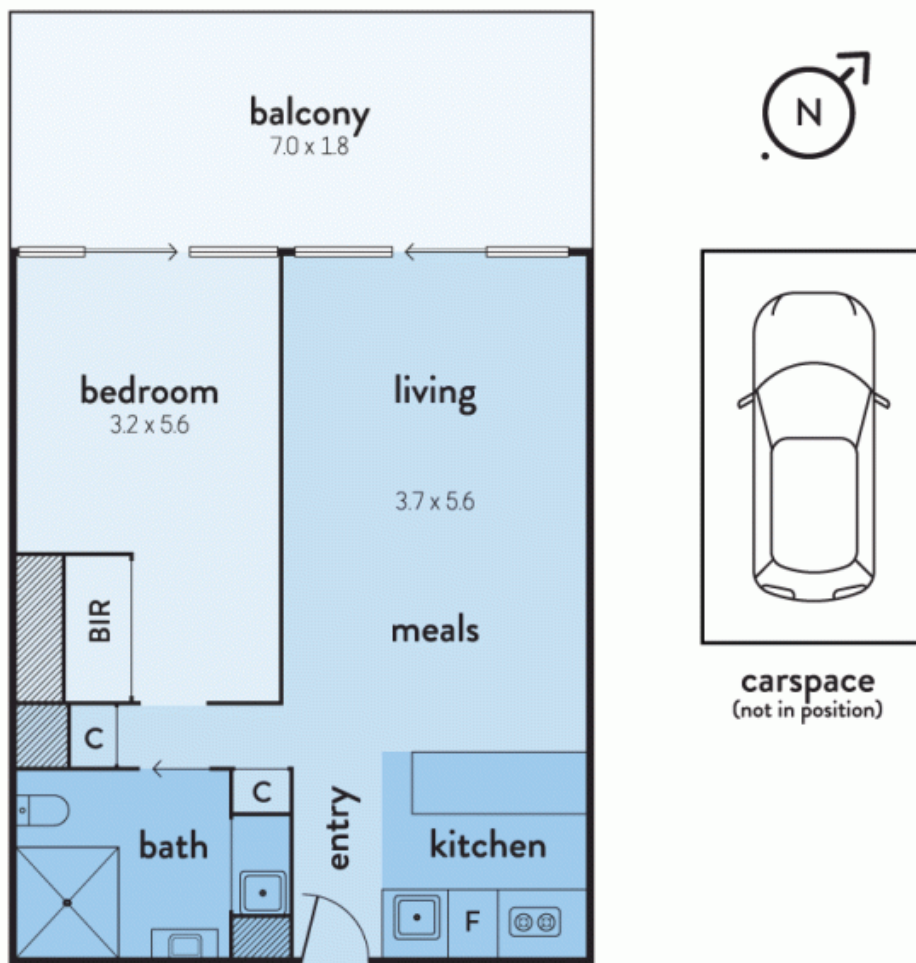
**Contact:** Baden Lucas  
03 9645 1199  
0418 888 751

**Type:** Apartment

**Sold Date:** 03/07/2017

<https://www.resbymirvac.com>

# 2005/60 LORIMER STREET, DOCKLANDS



real estate  
services  
by mirvac

Plans shown are only indicative of layout. Dimensions are approximate.

The above plan is an artist's impression only, it includes elements that are for display purposes and may not be to scale. Dimensions are approximate and every care has been taken to verify the accuracy of details.

**DOCKLANDS, VIC**  
2005/60 Lorimer Street