



## BONDI, NSW

3301/38 Wellington Street

2  
BED

2  
BATH

1  
CAR



### Large Corner Apartment with Ocean Views in 'The Moreton', Bondi

This 108sqm, Premium apartment features:

- Large bedrooms with generous built-in wardrobes
- Tiled living and dining area, ideal for entertaining
- Contemporary kitchen with stone benchtops and built-in Miele appliances
- Functional bathrooms with plenty of generous storage, bath in ensuite
- North facing private balcony, with water and park views
- Internal laundry with dryer included
- Secure car space and storage cage included
- Ducted A/C, video intercom and NBN connectivity
- Onsite building management, resident access to community garden with BBQ area

**\$1100 per week**

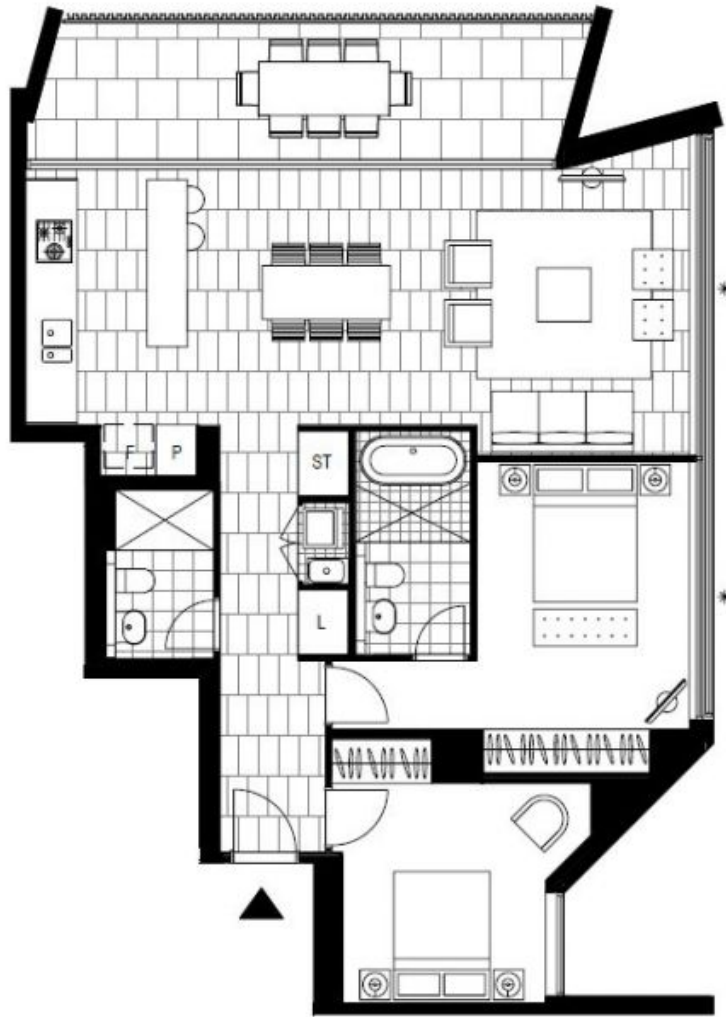
**Contact:** Carmen Whiteley  
02 8588 8888  
0497 555 519

**Type:** Apartment

**Date Available:** 27/01/2021

**Bond:** \$4400

<https://www.resbymirvac.com>



Plans shown are only indicative of layout. Dimensions are approximate.

**BONDI, NSW**  
3301/38 Wellington Street