

## BONDI, NSW

3303/38 Wellington Street

**2** BED **2** BATH **1** CAR 

### North Facing Two Bedroom in The Moreton

This North facing 2 bedroom apartment has to offer:

- Modern kitchen with stone benchtops and Miele appliances
- Tiled living/dining area flowing onto balcony
- Spacious balcony with gas and water connection
- Large bedrooms with built-in wardrobes
- Sleek bathrooms with plenty of storage, bath in ensuite
- Internal laundry with dryer included
- Secure basement carspace included
- Ducted A/C, video intercom and NBN connectivity
- 1.5km walk to the iconic Bondi Beach, 300m to public transport

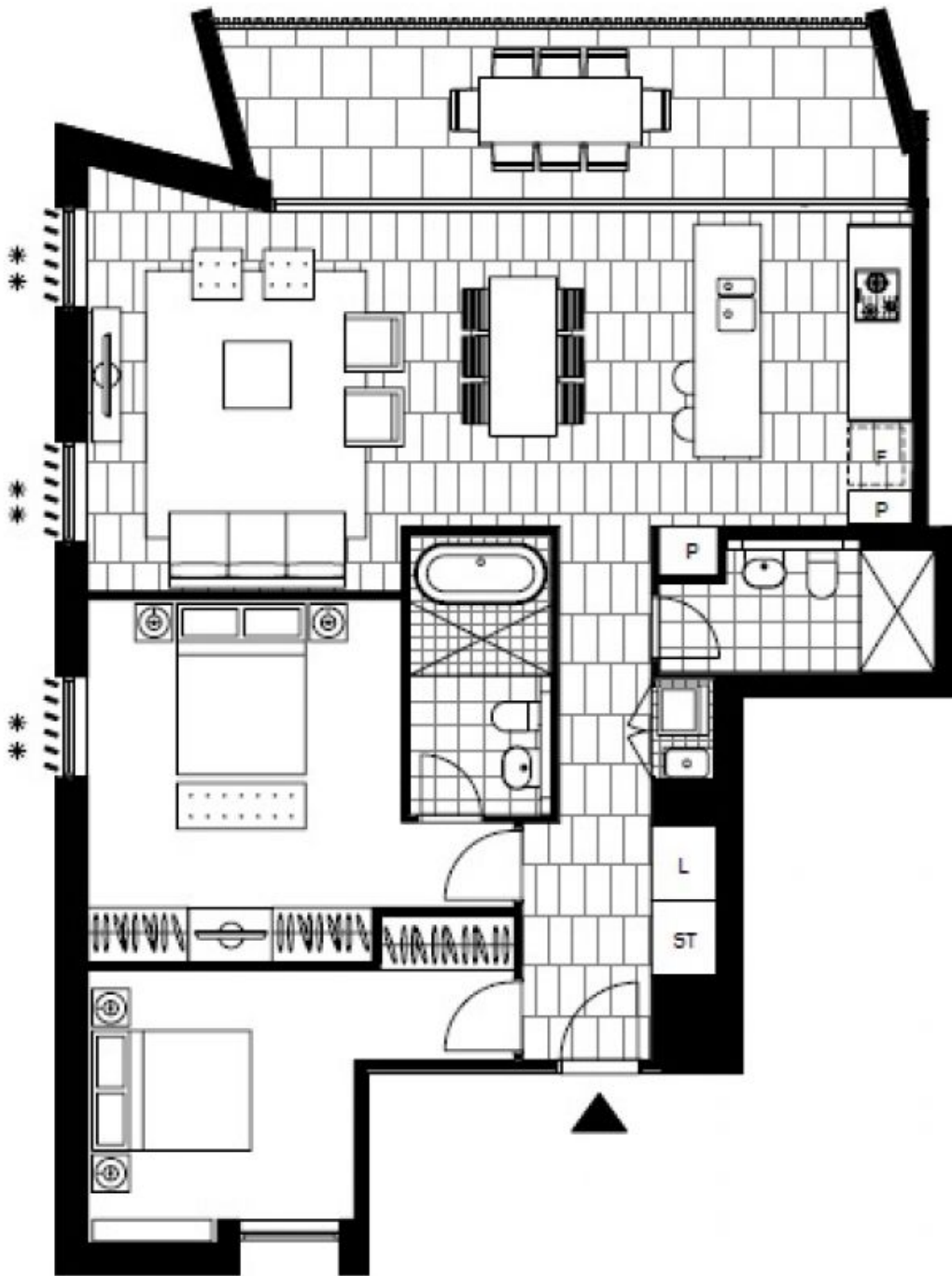
### DEPOSIT TAKEN - More Apartments Available!

**Contact:** Carmen Whiteley  
02 8588 8888  
0497 555 519

**Type:** Apartment  
**Date Available:** 29/04/2020

**Bond:** \$4000  
<https://www.resbymirvac.com>

For more information, please contact Real Estate Services by Mirvac on 02 8588 8888 or email [enquiries@resbymirvac.com](mailto:enquiries@resbymirvac.com)



Plans shown are only indicative of layout. Dimensions are approximate.

**BONDI, NSW**  
3303/38 Wellington Street