

GLEBE, NSW
21 Minogue Crescent

1 BED **1** BATH **1** CAR 

1-Bedroom Courtyard Apartment with Parking and Private Street Access!

This 75sqm, 1-Bedroom Apartment features:

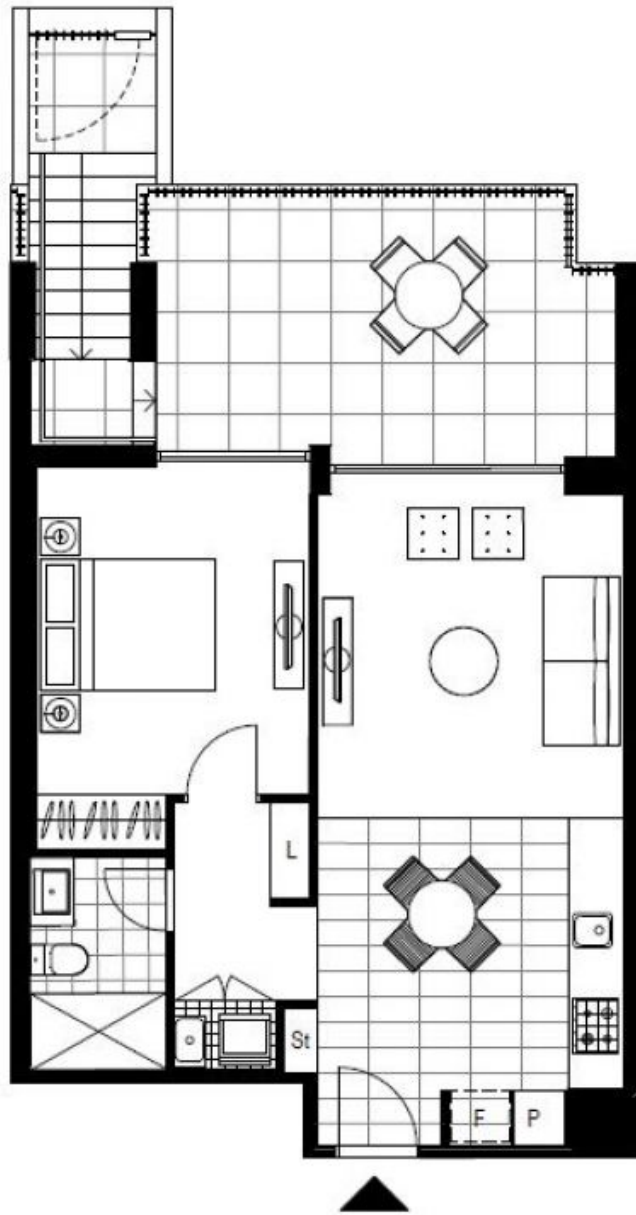
- Large bedroom with generous built-in wardrobe
- Open-plan living and dining area
- Modern kitchen with stone benchtop and Miele appliances
- Sleek bathroom with plenty of storage
- Large courtyard, with private street access
- Internal laundry with washing and dryer included
- Secure car space and storage cage included
- Ducted A/C, video intercom and NBN connectivity
- 650m to the Heritage-listed Tramsheds, light rail station and public transport

\$560 per week - Parking Included!

Contact: Naz Sabzpour
02 8588 8888
0401 545 440

Type: Apartment
Date Available: 09/04/2021
Bond: \$2240

<https://www.resbymirvac.com>



Plans shown are only indicative of layout. Dimensions are approximate.

GLEBE, NSW
21 Minogue Crescent