

GLEBE, NSW

418/19 Minogue Crescent

2 BED **2** BATH **1** CAR 

Deposit Taken!

This 93sqm, 4th floor Apartment features:

Impressive 2-Bedroom Apartment in Harold Park

- Spacious bedrooms with generous built-in wardrobes
- Open-plan living and dining area, leading to the balcony
- Stylish kitchen with stone benchtops and Miele appliances
- Ultramodern bathrooms with plenty of storage
- North-facing sunny balcony, perfect for entertaining
- Internal laundry with washer and dryer included
- Study nook at entry, perfect for a home office
- Secure car space and storage cage included
- Ducted A/C, video intercom and NBN connectivity
- 500m to the Heritage-listed Tramsheds, light rail station and public transport

Deposit Taken

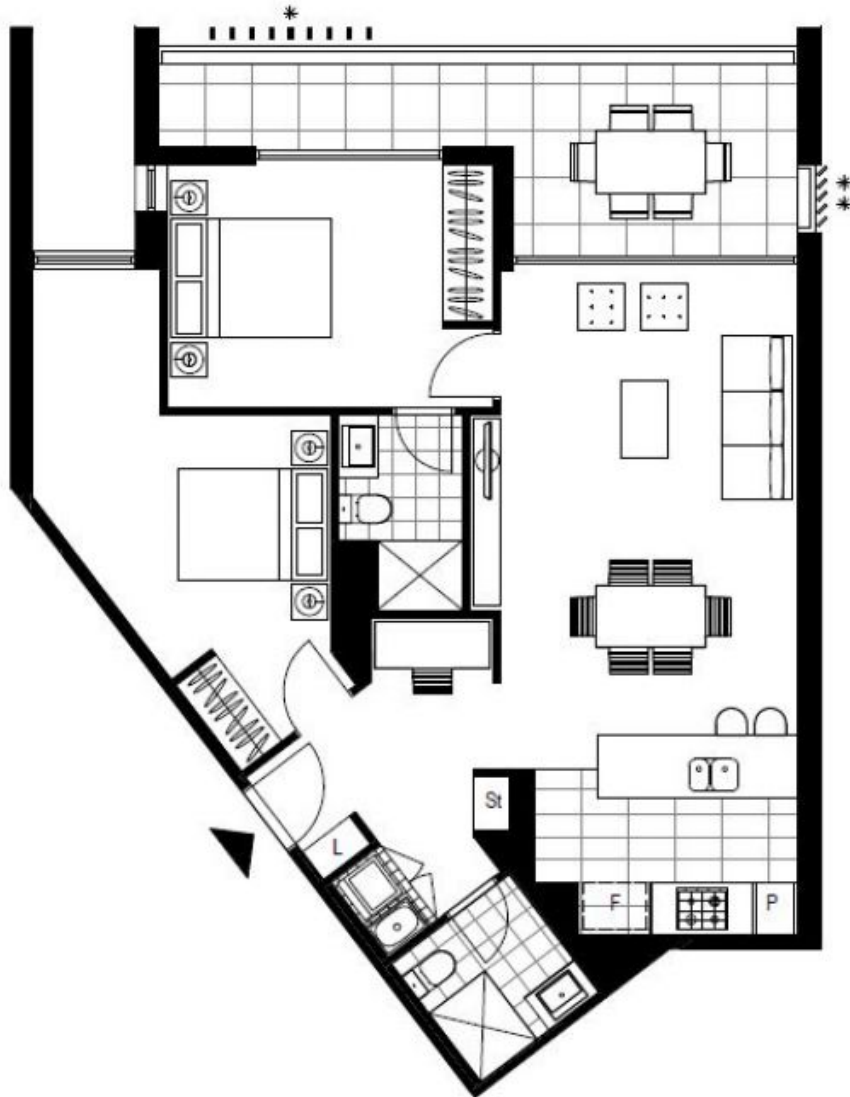
Contact: Matthew Matthews
02 8588 8888
0418 266 590

Type: Apartment

Date Available: 06/03/2020

Bond: \$3200

<https://www.resbymirvac.com>



Plans shown are only indicative of layout. Dimensions are approximate.

GLEBE, NSW
418/19 Minogue Crescent