

BONDI, NSW
5109/34 Wellington Street

1 **1** **1** **RES**
BED BATH CAR

North-facing 1-Bedroom Apartment with Courtyard and Parking

This 87sqm, private 1-Bedroom Apartment has to offer;

- Spacious courtyard, with direct access to common gardens
- Well appointed bedroom with floor to ceiling built-in wardrobe
- Ultra modern kitchen with stone benchtops and Miele appliances
- Sleek bathroom with hidden storage
- Open plan, fully tiled living and dining area
- Secure basement car space and storage cage included
- Ducted A/C, video intercom and NBN connectivity
- Close to schools, transport and the iconic Bondi Beach (1.5km)

800

Contact:

Georgia Glynn
02 8588 8888
0481 388 777
Carmen Whiteley
02 8588 8888
0497 555 519

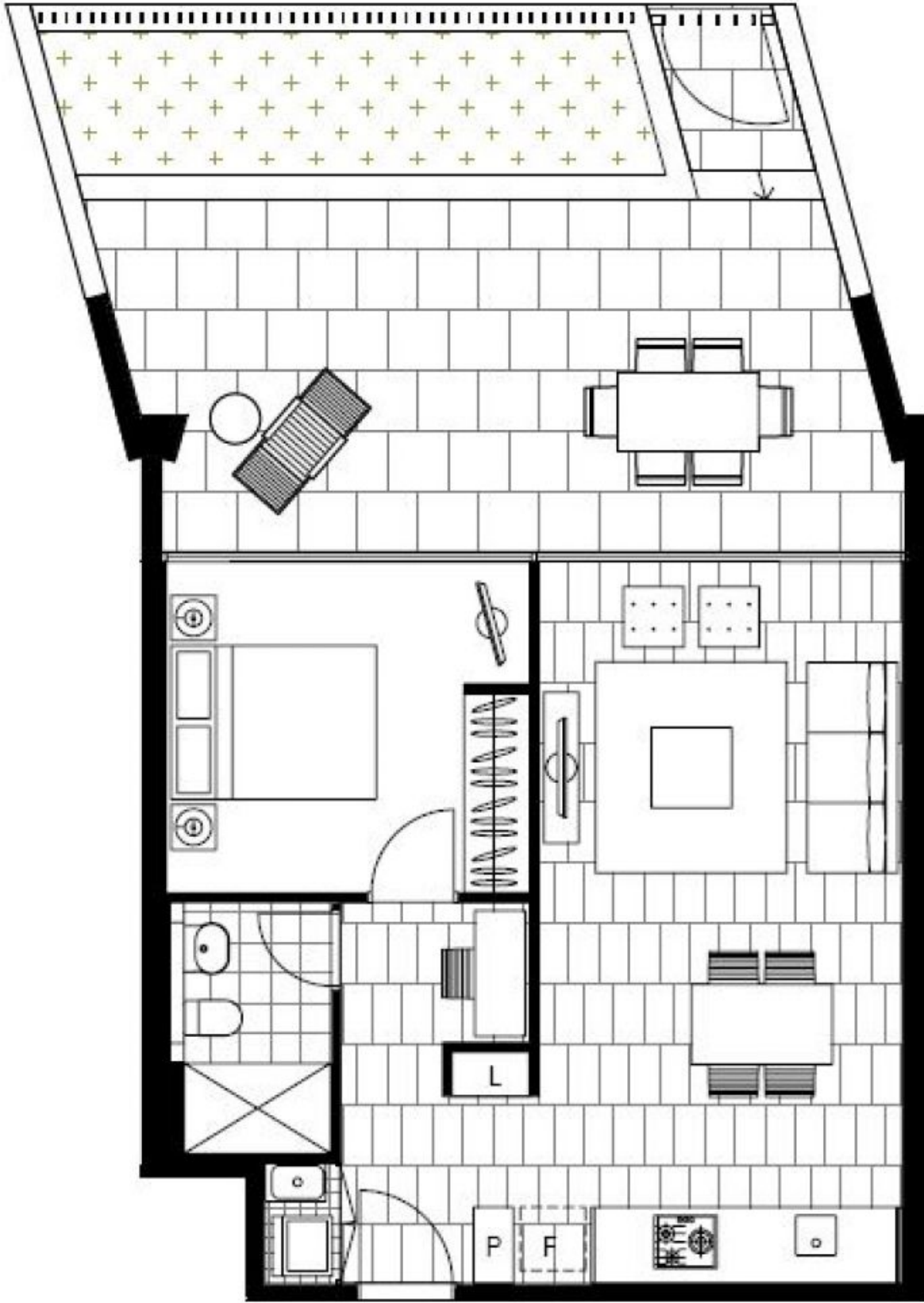
Type: Apartment

Date Available: 21/07/2018

Bond: \$3200

<https://www.resbymirvac.com>

For more information, please contact Real Estate Services by Mirvac on 02 8588 8888 or email enquiries@resbymirvac.com



Plans shown are only indicative of layout. Dimensions are approximate.

BONDI, NSW
5109/34 Wellington Street