



## ZETLAND, NSW

1002/18 Ebsworth Street

**3** BED **2** BATH **1** CAR 

### Available Now! Top floor 3-Bedroom Apartment with city skyline views

This 121sqm, East facing apartment in Ebsworth features;

- Modern kitchen with stone benchtops and Miele appliances
- Open plan living and dining area
- Entertainers' balcony with city views
- Large bedrooms with floor to ceiling built-in wardrobes
- Modern bathrooms with bathtub in ensuite
- Secure basement car space and storage cage included
- Ducted A/C, video intercom and NBN connectivity
- Close to Woolworths, 'The Social Corner' and Green Square Train Station

**1100**

**Contact:**

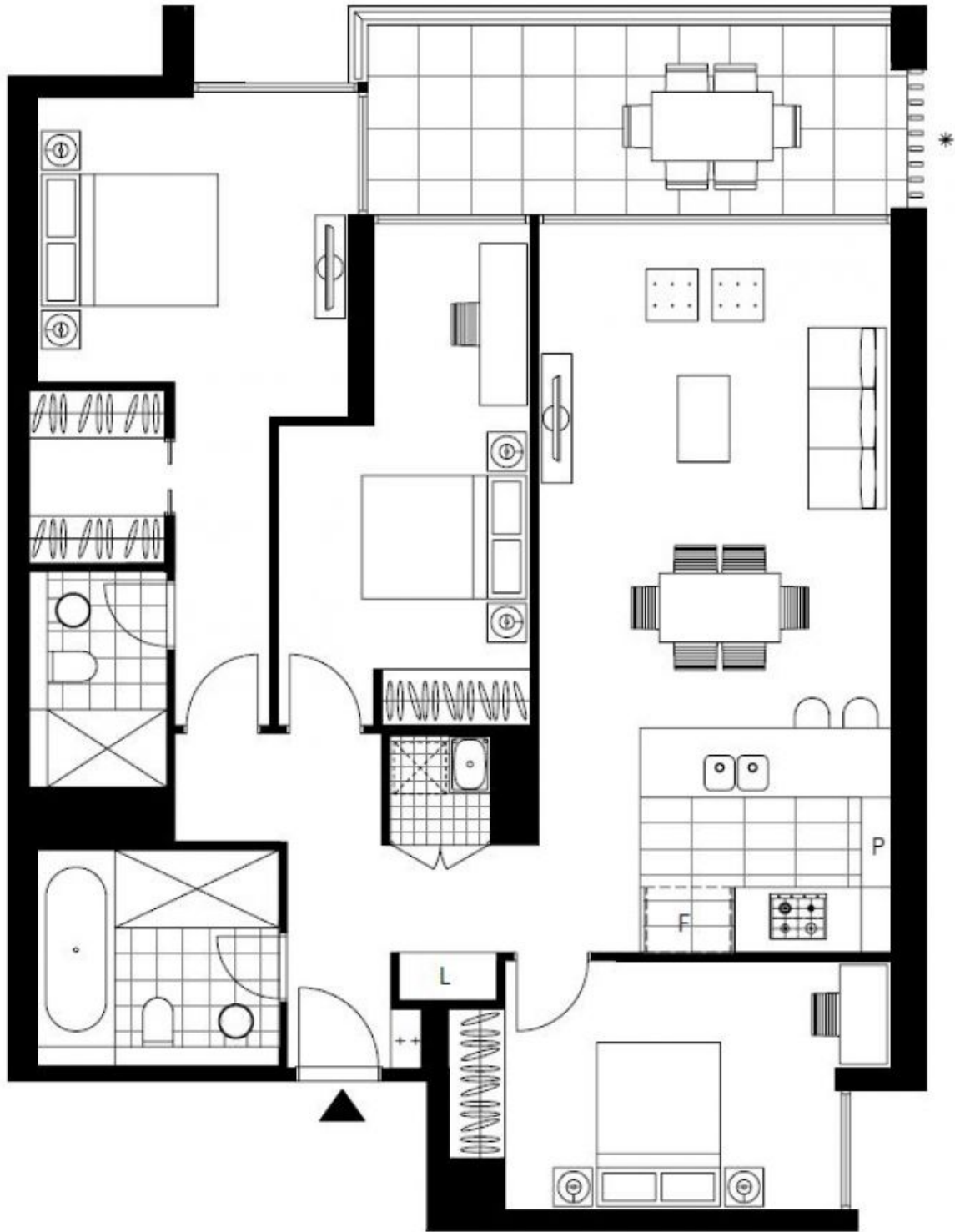
Georgia Glynn  
02 8588 8888  
0481 388 777  
Carmen Whiteley  
02 8588 8888  
0497 555 519

**Type:** Apartment

**Date Available:** 19/05/2018

**Bond:** \$4400

<https://www.resbymirvac.com>



Plans shown are only indicative of layout. Dimensions are approximate.

**ZETLAND, NSW**  
1002/18 Ebsworth Street