

GLEBE, NSW
705/10 Scotsman Street

2 BED **2** BATH **1** CAR 

Large 2-Bedroom Apartment with spacious balcony

This 129sqm, North-West Facing 2-Bedroom Apartment has to offer:

- Modern kitchen with stone benchtop and built-in appliances
- Well-appointed bedrooms with floor to ceiling built-in wardrobes
- Sleek bathroom with bath in ensuite
- Large entertainer's balcony with access from living area
- Internal laundry with washer and dryer included
- Ducted A/C, video intercom and NBN connectivity
- Secure basement car space and storage cage provided
- Walking distance to buses, the light rail and the Tramsheds

DEPOSIT TAKEN

Contact: Matthew Matthews
02 8588 8888
0418 266 590

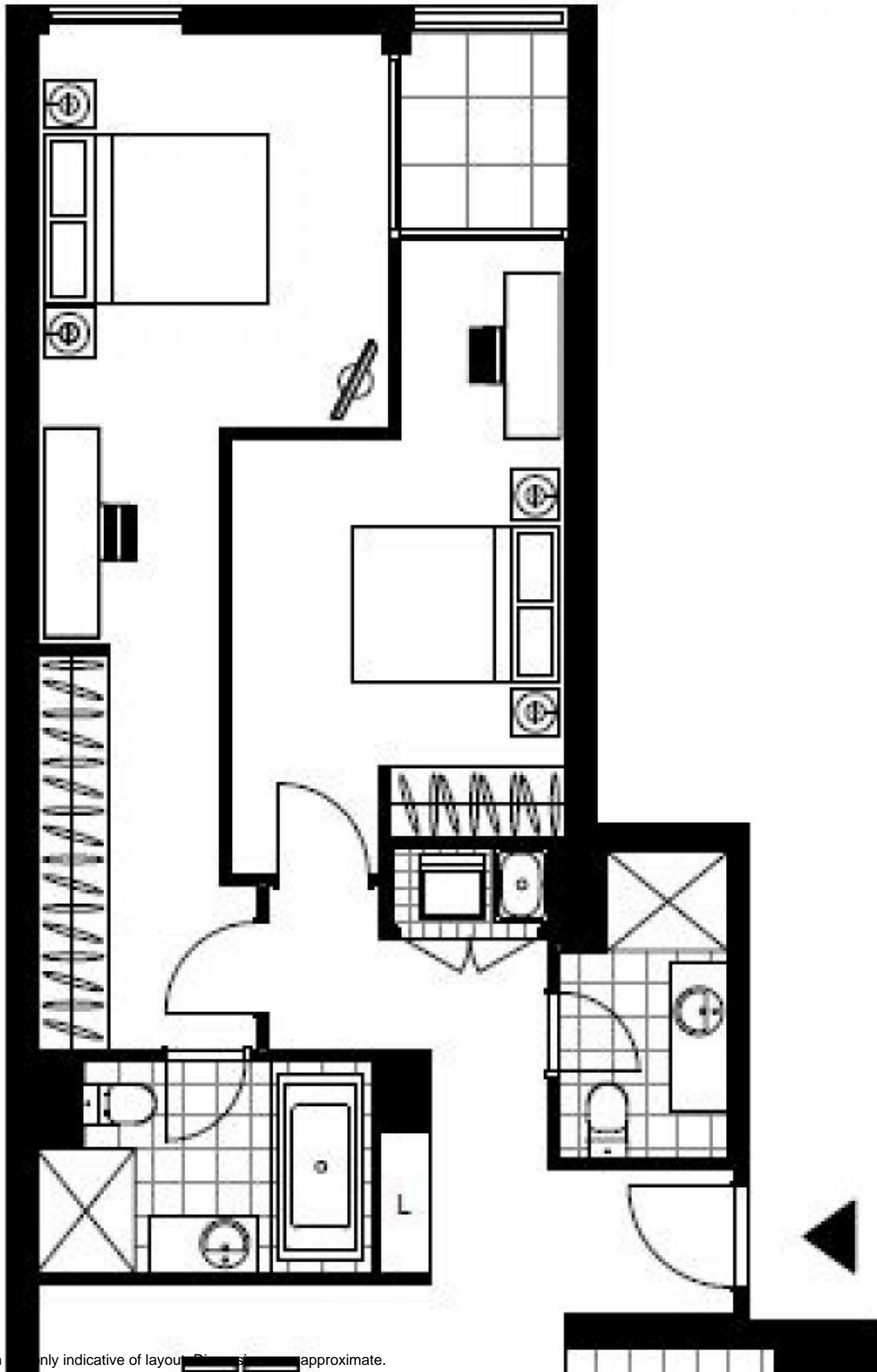
Type: Apartment

Date Available: 15/05/2018

Bond: \$3480

<https://www.resbymirvac.com>

****Property is unfurnished****



Plans shown are only indicative of layout. Dimensions are approximate.

GLEBE, NSW
705/10 Scotsman Street