

GLEBE, NSW

705/22 Scotsman St

2 BED **2** BATH **1** CAR



2 Bedroom Apartment by Mirvac - Harold Park

Real Estate Service by Mirvac are offering for sale this 2 bedroom apartment located within Locarno.

Located on Level 7, this well presented and maintained apartment offers

- 2 bedrooms,
- 2 bathrooms,
- Open living area,
- Balcony, accessed via lounge and main bedroom,
- 2 years old,

Harold Park offers you the on site convenience of "Tramsheds" incl our local supermarket, array of cafes and restaurants together with the newly opened parklands incl walking tracks leading from your front door to the Bay and Sydney Fishmarkets.

Local Public transport incl, Light Rail and Bus that adjoin Harold Park.

PRICE REDUCTION \$1,099,000

Council Rates: \$994/year (approx)

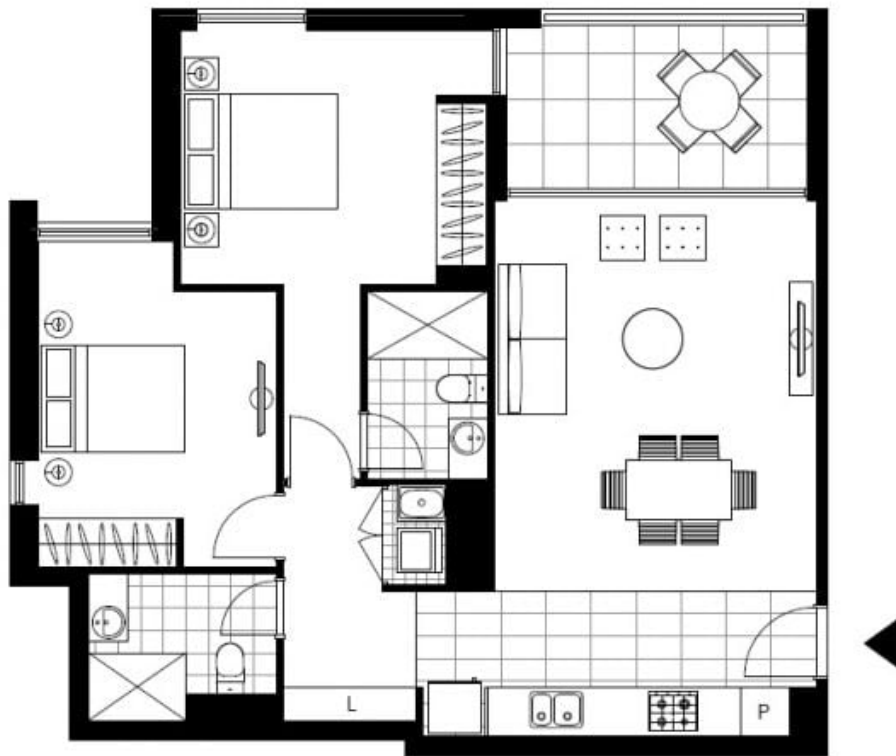
Strata Rates: \$4,208/year (approx)

Contact: Matthew Matthews
02 8588 8888
0418 266 590

Type: Apartment

Sold Date: 14/06/2017

<https://www.resbymirvac.com>



Plans shown are only indicative of layout. Dimensions are approximate.

GLEBE, NSW
705/22 Scotsman St