

## BONDI, NSW

5503/34 Wellington Street

1 BED 1 BATH 1 CAR



### North-facing 1-Bedroom Apartment with parking

This level 5, 67sqm 1-Bedroom Apartment features;

- Large balcony with partial ocean views and leafy outlook
- Bright bedroom with floor to ceiling built ins
- Modern stone kitchen with Miele appliances
- Internal laundry with Miele washer & dryer included
- Separate study nook
- Allocated car parking AND basement storage cage included

For more information, please contact Real Estate Services by Mirvac on 02 8588 8888

### DEPOSIT TAKEN

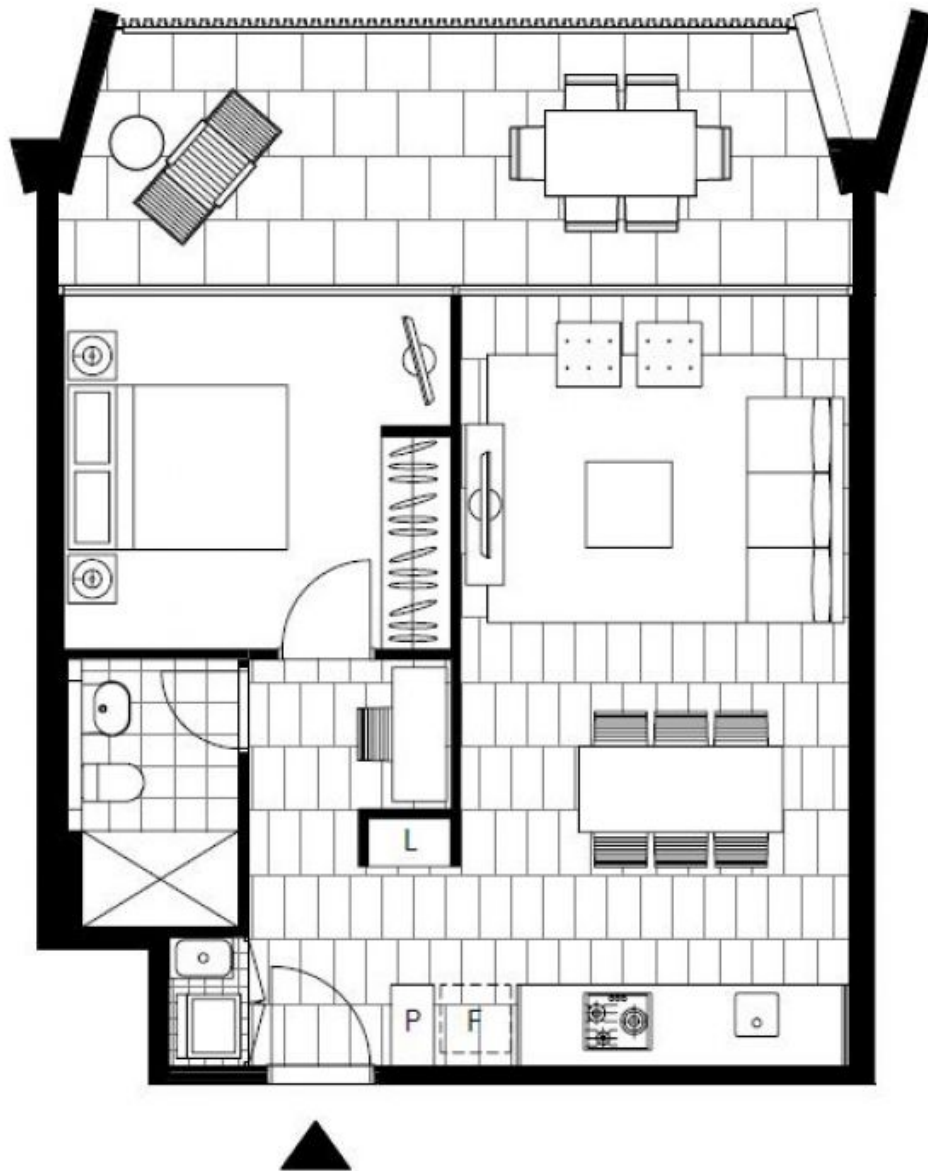
**Contact:** Georgia Glynn  
02 8588 8888  
0481 388 777  
Carmen Whiteley  
02 8588 8888  
0497 555 519

**Type:** Apartment

**Date Available:** 10/02/2018

**Bond:** \$3200

<https://www.resbymirvac.com>



Plans shown are only indicative of layout. Dimensions are approximate.

**BONDI, NSW**  
5503/34 Wellington Street