

## ZETLAND, NSW

611/18 Ebsworth Street

**2** **2** **1**   
BED BATH CAR

### 2-Bedroom Apartment with City Views and Parking

This 86sqm, 6th floor Apartment features:

- Large bedrooms with generous built-in wardrobes
- Open-plan living and dining area PLUS built-in TV cabinet
- Contemporary kitchen with stone bench tops and Miele appliances
- Sleek bathrooms offering plenty of vanity storage
- North facing entertainers balcony with city views
- Internal laundry including dryer
- Secure car space and storage cage included
- Ducted A/C, video intercom and NBN connectivity
- 300m to Woolworths, The Social Corner and Green Square Train Station (10mins to the City)

### DEPOSIT TAKEN!

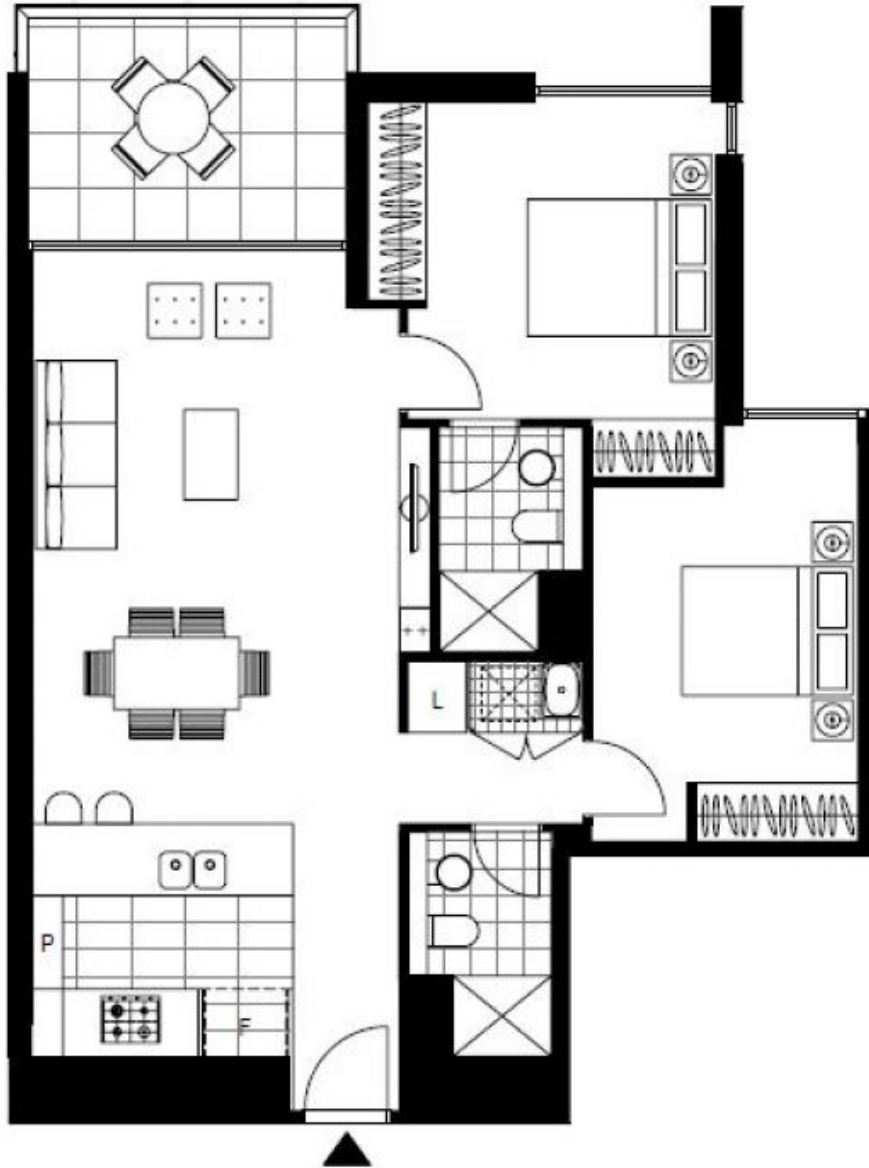
**Contact:** Carmen Whiteley  
02 8588 8888  
0497 555 519

**Type:** Apartment

**Date Available:** 30/05/2019

**Bond:** \$3200

<https://www.resbymirvac.com>



Plans shown are only indicative of layout. Dimensions are approximate.

**ZETLAND, NSW**  
611/18 Ebsworth Street