

BONDI, NSW
6207/32 Wellington Street

1 **1** **1**
BED BATH CAR



Premium 1-Bedroom Apartment with Parking in 'The Moreton', Bondi!

This Level 2, Mirvac Apartment features;

- Well-appointed bedroom with generous built-in wardrobe
- Open-plan and tiled living & dining area, great for entertaining
- Contemporary kitchen with stone benchtops and Miele appliances
- Stylish bathroom with plenty of vanity storage
- Sunny balcony, with access from master bedroom and living room
- Internal laundry with dryer included
- Secure car space and motorbike space included
- Ducted A/C, video intercom and NBN connectivity
- Onsite building management, resident access to community garden with BBQ area

DEPOSIT TAKEN

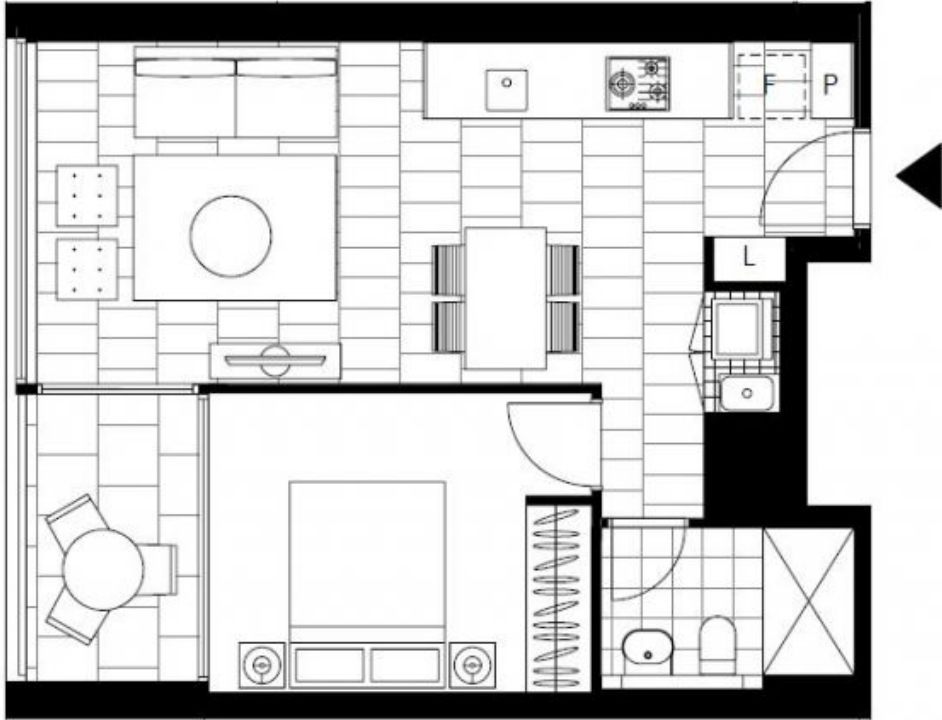
Contact: Carmen Whiteley
02 8588 8888
0497 555 519

Type: Apartment

Date Available: 05/02/2021

Bond: \$3000

<https://www.resbymirvac.com>



Plans shown are only indicative of layout. Dimensions are approximate.

BONDI, NSW
6207/32 Wellington Street