



ZETLAND, NSW

1008/28 Ebsworth Street

3 BED **2** BATH **1** CAR 

3 Bedroom Apartment with City Views and Parking

This 117qm, Top Floor Apartment features:

- Well-appointed bedrooms with generous built-in wardrobes, master with walk-in
- Open-plan living and dining area, great for entertaining
- Contemporary kitchen with stone benchtops and Miele appliances
- Sleek bathrooms with plenty of vanity storage, bath in main
- North-East facing entertainers' balcony with city views
- Internal laundry with dryer included
- Secure car space and storage cage included
- Ducted A/C, video intercom and NBN connectivity
- 300m to Woolworths, The Social Corner and Green Square Train Station (10mins to the City)

DEPOSIT TAKEN

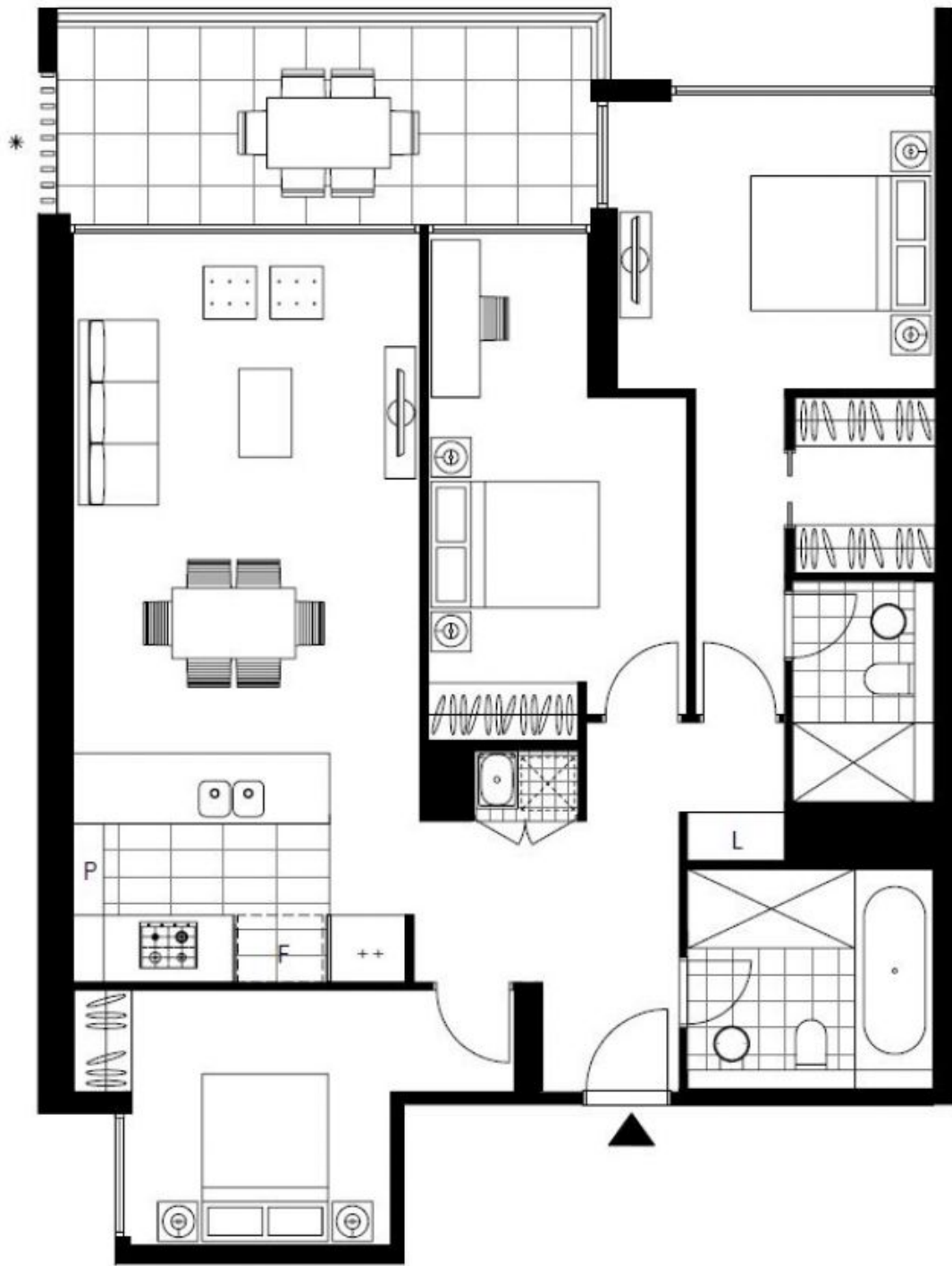
Contact: Carmen Whiteley
02 8588 8888
0497 555 519

Type: Apartment

Date Available: 30/11/2019

Bond: \$4000

<https://www.resbymirvac.com>



Plans shown are only indicative of layout. Dimensions are approximate.

ZETLAND, NSW
1008/28 Ebsworth Street