

GLEBE, NSW

206/6 Maxwell Road

2
BED

1
BATH

1
CAR



Large Two Bedroom in Maxwell Place

Located within "Maxwell Place".

This LARGE 2 bedroom apartment offers:

- Two double bedrooms with floor to ceiling built ins in each
- A moment walk to Harold Park's Tramsheds
- Immaculately appointed kitchen, Miele appliances
- Internal laundry with washer and dryer included
- Storage cage and parking in basement

Contact our team on 8588 8888 for more information.

800

Contact:

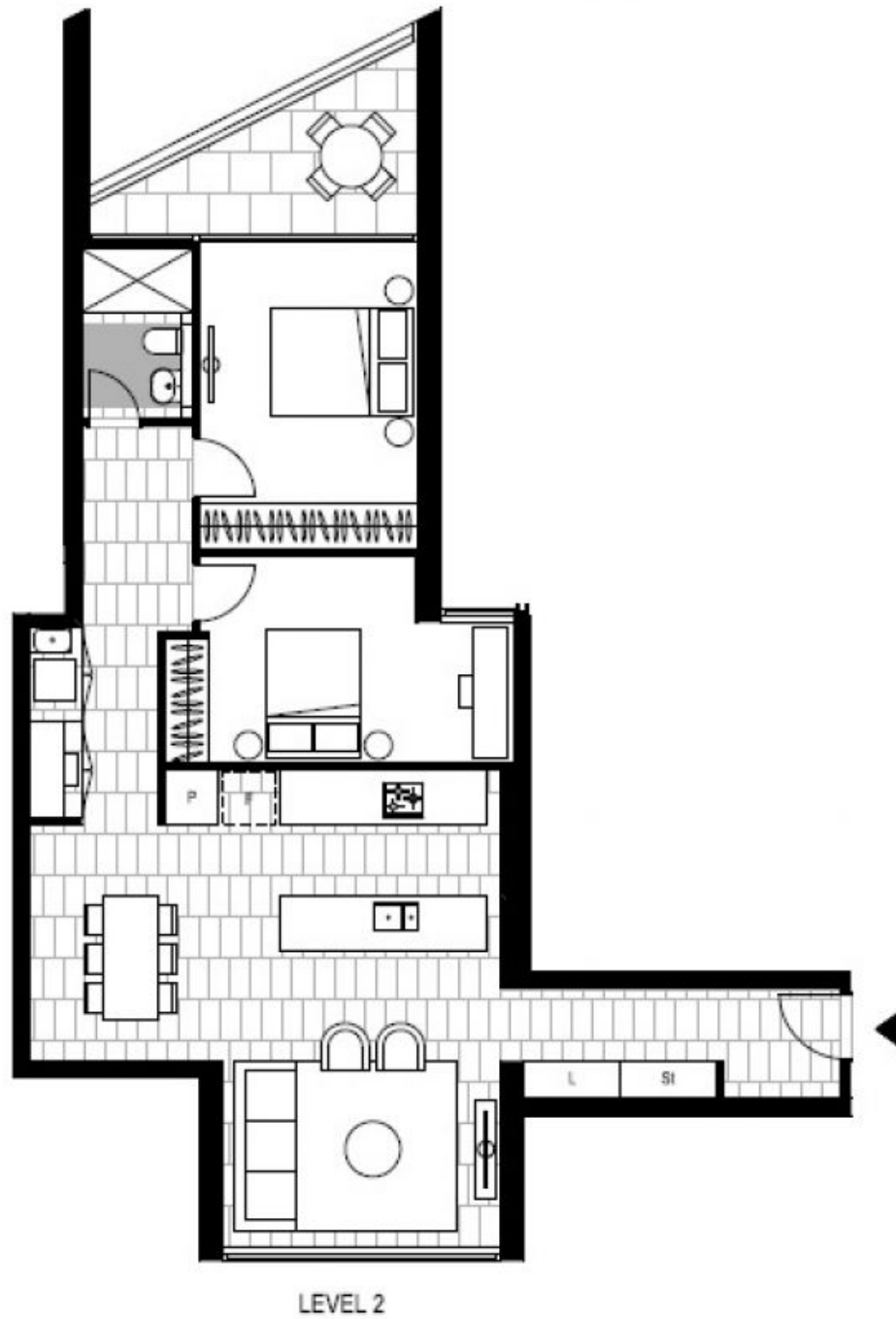
Naz Sabzpouri
02 8588 8888
0401 545 440

Type:

Apartment

Date Available: 10/04/2017

<https://www.resbymirvac.com>



Plans shown are only indicative of layout. Dimensions are approximate.

GLEBE, NSW
206/6 Maxwell Road