

**ZETLAND, NSW**  
811/18 Ebsworth Street

**2** BED **2** BATH **1** CAR 

**North-East Facing 2-Bedroom Apartment with City Views in Green Square**

This 86sqm, 8th floor apartment features:

- Well-appointed bedrooms with floor-to-ceiling built-in wardrobes
- Functional open-plan living and dining area, with built-in TV cabinetry
- Quality kitchen with stone benchtops and built-in Smeg appliances
- Contemporary bathrooms with plenty of vanity storage
- Sunny North-East facing balcony, great for entertaining
- Internal laundry with dryer included
- Secure car space and storage cage included
- Ducted A/C, video intercom and NBN connectivity
- 300m to Woolworths, Green Square Train Station (10mins to the City) and Green Square Library

**More apartments coming soon!**

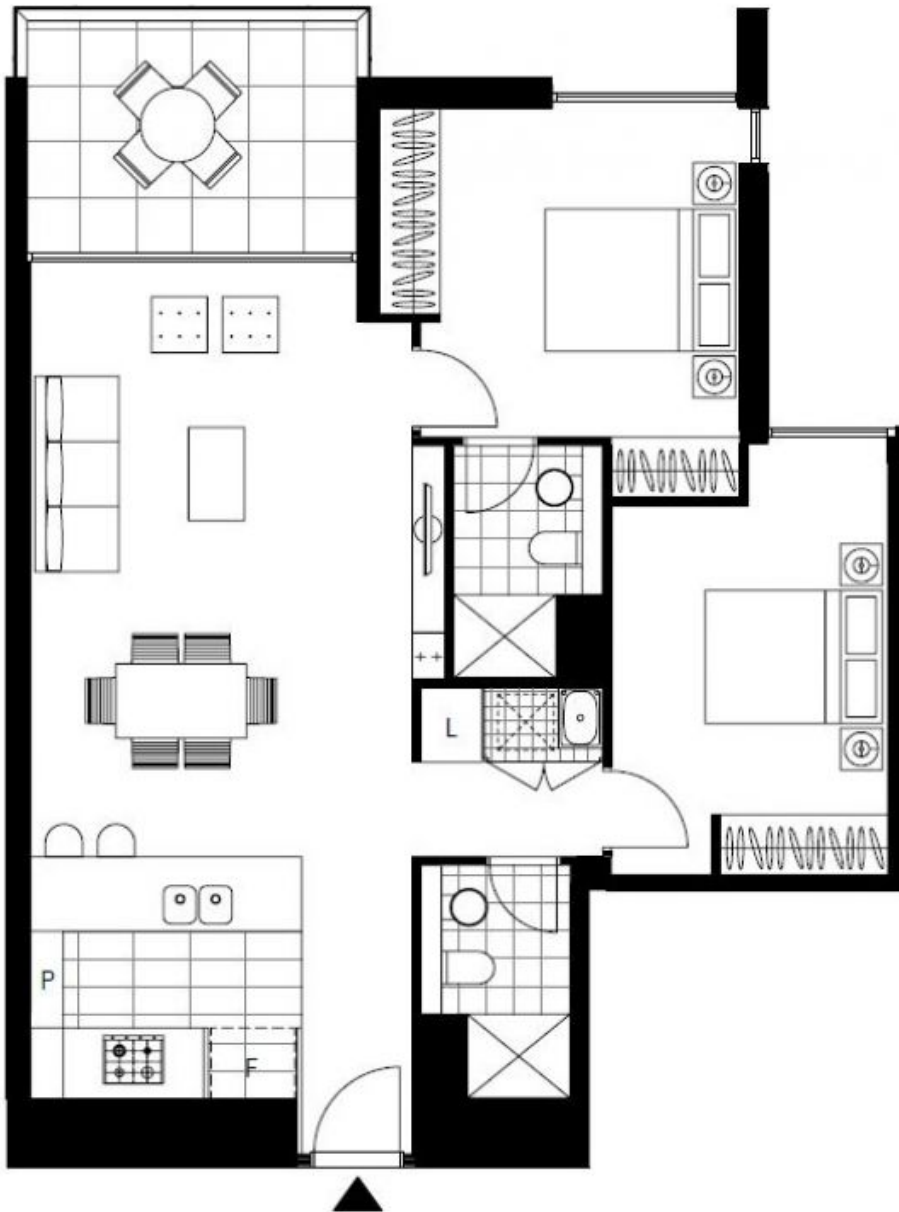
**Contact:** Carmen Whiteley  
02 8588 8888  
0497 555 519

**Type:** Apartment

**Date Available:** 20/05/2021

**Bond:** \$3000

<https://www.resbymirvac.com>



Plans shown are only indicative of layout. Dimensions are approximate.

**ZETLAND, NSW**  
811/18 Ebsworth Street