



## GLEBE, NSW

2302/7 Scotsman Street

**1**  
BATH



### 45sqm Studio Apartment within Harold Park

This functional Studio Apartment offers;

- Modern stone kitchen with Miele appliances
- Sliding panels to separate to the living space
- Internal laundry with washing machine & dryer INCLUDED
- Large balcony with leafy outlook
- Ample internal storage
- Within moments walk to public transport and the Tramsheds

Call Real Estate Services by Mirvac on (02) 8588 8888 for further information

\*\*\* Images not of actual unit \*\*\*

**500**

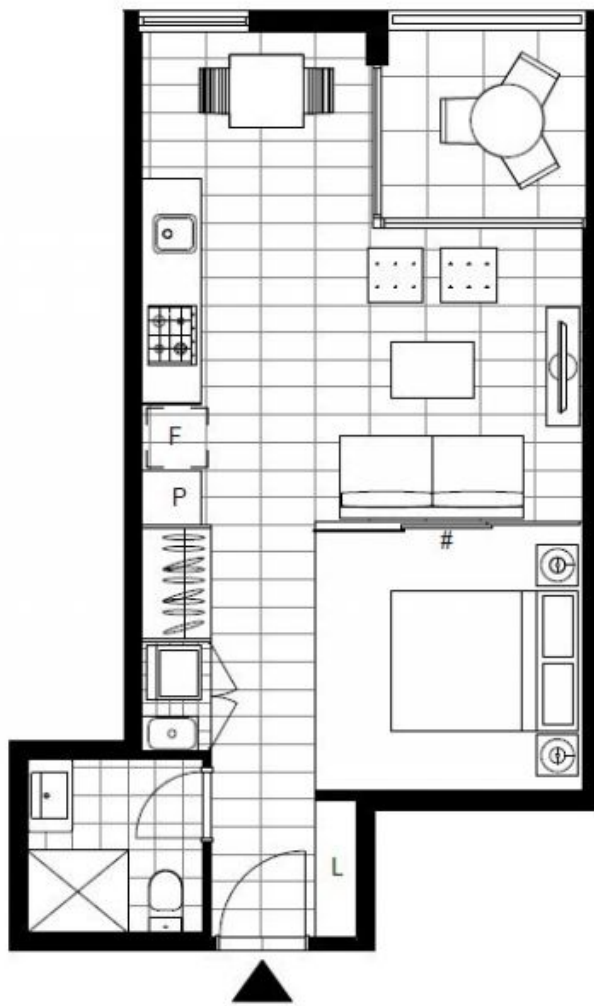
**Contact:** Naz Sabzpouri  
02 8588 8888  
0401 545 440

**Type:** Studio

**Date Available:** 13/04/2017

**Bond:** \$2040

<https://www.resbymirvac.com>



Plans shown are only indicative of layout. Dimensions are approximate.

**GLEBE, NSW**  
2302/7 Scotsman Street