

## DEPOSIT TAKEN

If you are interested in leasing/renting out your  
apartment in The Moreton, call our leasing hotline  
**0497 555 519 today!**

[www.resbymirvac.com](http://www.resbymirvac.com)



THE MORETON  
BONDI



**BONDI, NSW**  
5202/34 Wellington Street

**1**  
BED

**1**  
BATH



### Garden-Facing, 1-Bedroom Apartment in 'The Moreton', Bondi

This Oversized, Garden-facing Apartment features:

- Well-appointed bedroom with generous built-in wardrobe
- Tiled living and dining area, great for entertaining
- Contemporary kitchen with stone benchtop and Miele appliances
- Sleek bathroom with plenty of vanity storage
- North-facing entertainers' balcony, overlooking the internal gardens
- Internal laundry with washing machine and dryer included
- Study nook off bedroom, perfect for a home office
- Secure storage cage included
- Ducted A/C, video intercom and NBN connectivity
- 1.5km walk to the iconic Bondi Beach, 300m to public transport

### DEPOSIT TAKEN

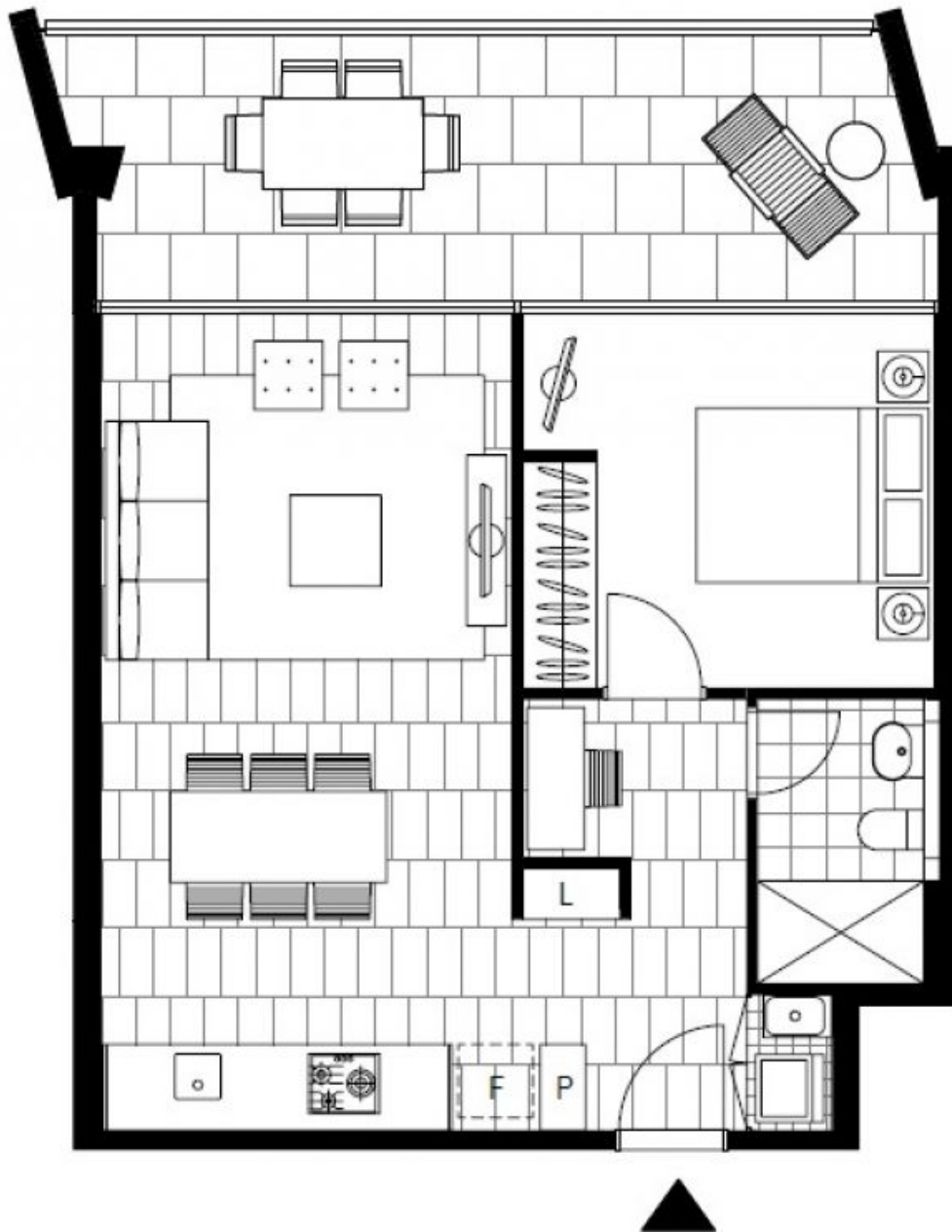
**Contact:** Carmen Whiteley  
02 8588 8888  
0497 555 519

**Type:** Apartment

**Date Available:** 31/10/2020

**Bond:** \$2680

<https://www.resbymirvac.com>



Plans shown are only indicative of layout. Dimensions are approximate.

**BONDI, NSW**  
5202/34 Wellington Street