

ZETLAND, NSW

905/28 Ebsworth Street

2 **2** **1** 
BED BATH CAR

Bright 2-Bedroom Apartment with Parking in Zetland

This 115sqm, 9th floor Apartment features:

- Spacious bedrooms with generous built-in wardrobes
- Open-plan living and dining area, great for entertaining
- Contemporary kitchen with stone benchtop and Smeg appliances
- Sleek bathrooms with plenty of vanity storage
- Large balcony, overlooking district views
- Internal laundry with dryer included
- Secure car space and storage cage included
- Ducted A/C, video intercom and NBN connectivity
- 300m to Woolworths, The Social Corner and Green Square Train Station (10mins to the City)

DEPOSIT TAKEN

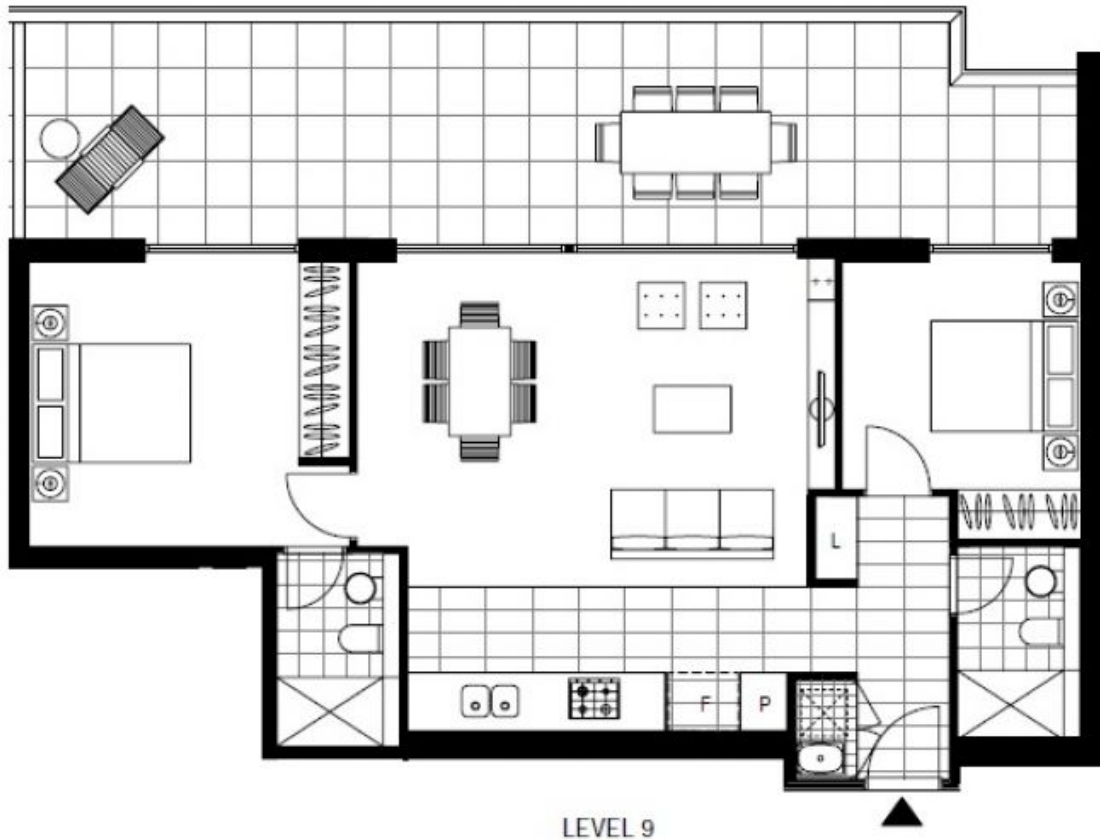
Contact: Carmen Whiteley
02 8588 8888
0497 555 519

Type: Apartment

Date Available: 26/09/2019

Bond: \$3200

<https://www.resbymirvac.com>



Plans shown are only indicative of layout. Dimensions are approximate.

ZETLAND, NSW
905/28 Ebsworth Street