



DEPOSIT TAKEN

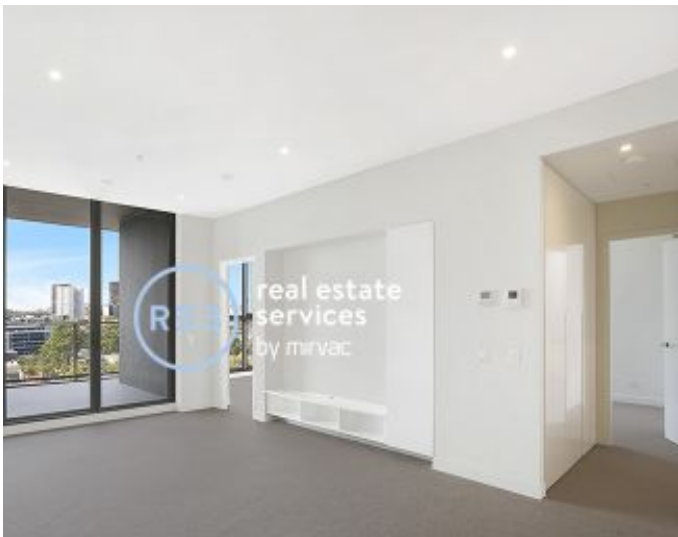
FIRST INSPECTION!

For information on more properties available for lease in Green Square,
please call our leasing hotline 0497 555 519

www.resbymirvac.com



GREEN SQUARE



ZETLAND, NSW
1010/28 Ebsworth Street

2 **2** **1** 
BED BATH CAR

North-East Facing 2-Bedroom Apartment in Green Square, Zetland

This 88sqm, 2-Bedroom Apartment features:

- Spacious bedrooms with generous built-in wardrobes
- Open-plan living and dining area, leading to the balcony
- Contemporary kitchen with stone benchtop and Smeg appliances
- Sleek bathrooms with plenty of storage
- North-East facing balcony with sweeping city views
- Internal laundry with dryer included
- Secure car space and storage cage included
- Ducted A/C, video intercom and NBN connectivity
- 300m to Woolworths, The Social Corner and Green Square Train Station (10mins to the City)

DEPOSIT TAKEN

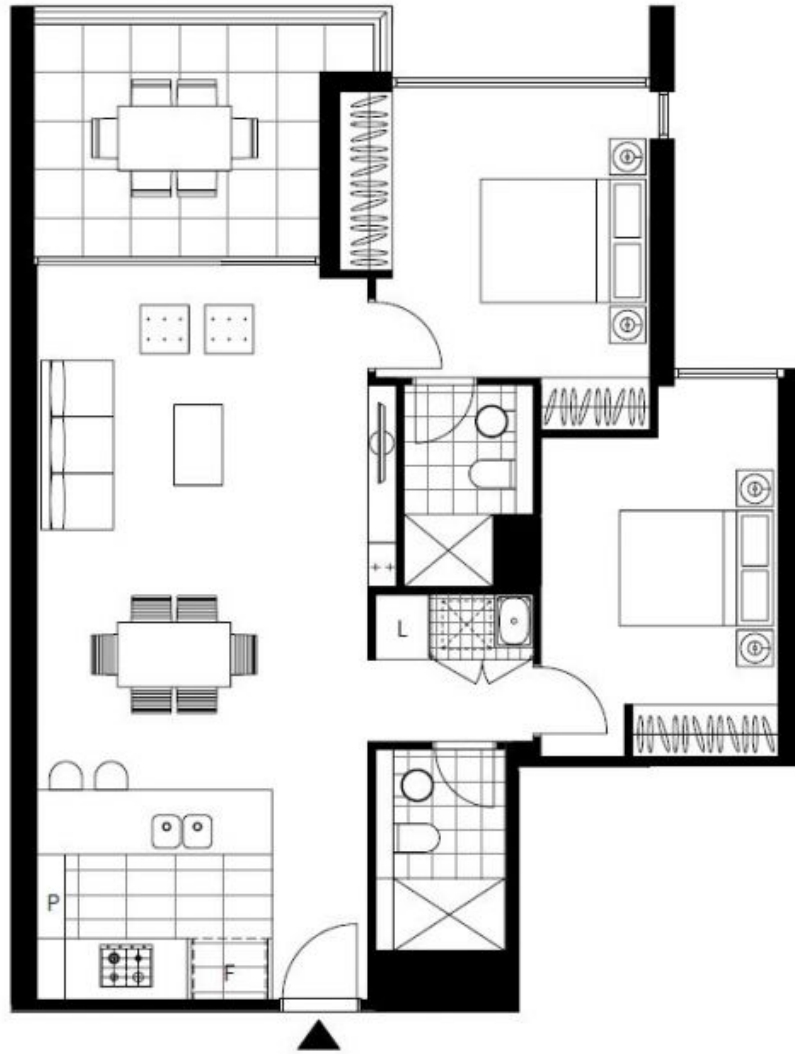
Contact: Carmen Whiteley
02 8588 8888
0497 555 519

Type: Apartment

Date Available: 10/12/2020

Bond: \$2760

<https://www.resbymirvac.com>



Plans shown are only indicative of layout. Dimensions are approximate.

ZETLAND, NSW
1010/28 Ebsworth Street