

ZETLAND, NSW
903/18 Ebsworth Street

2 BED **2** BATH **1** CAR 

Spacious 2-Bedroom Apartment with Parking + Motorbike Space in Green Square

This 118sqm, 9th floor Apartment features:

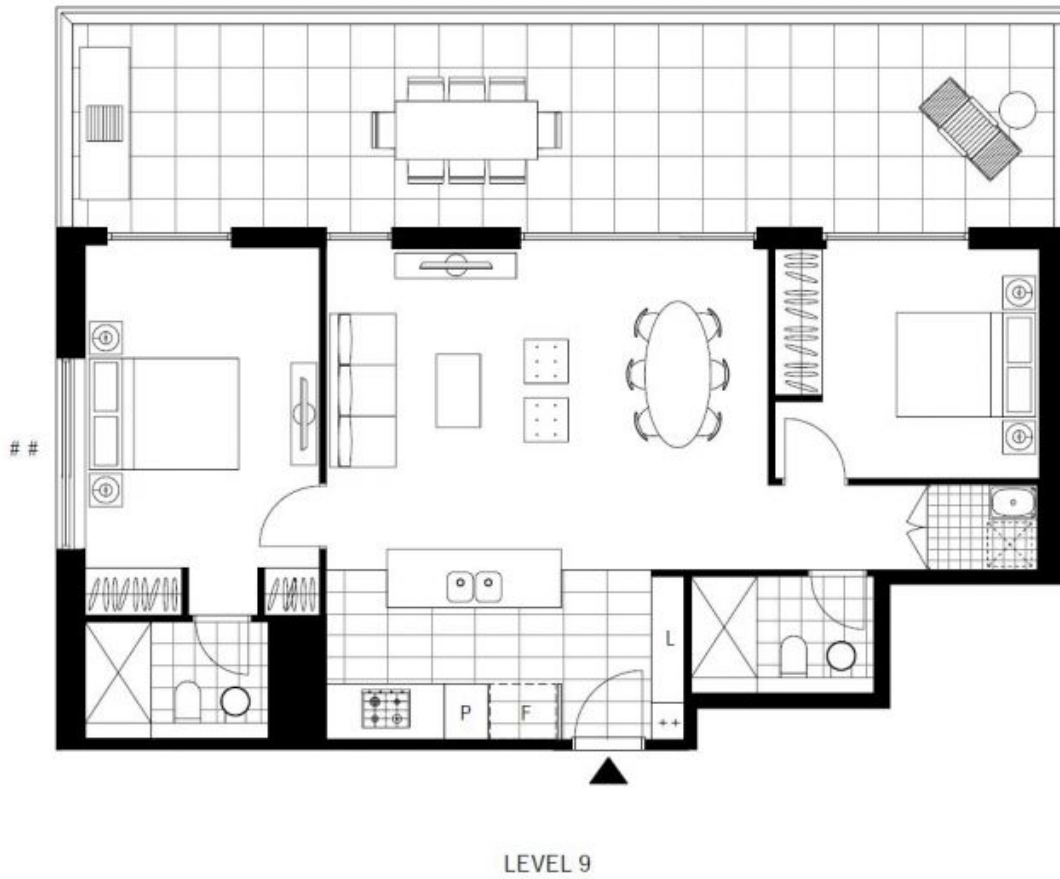
- Well-appointed bedrooms with generous built-in wardrobes
- Open-plan living and dining area, with room to entertain
- Modern kitchen with stone benchtops and Smeg appliances
- Sleek bathrooms with plenty of vanity storage
- Spacious entertainers' terrace, with access from bedrooms and living room
- Internal laundry with dryer included
- Secure car space, motorbike space and storage cage included
- Ducted A/C, video intercom and NBN connectivity
- 300m to Woolworths, The Social Corner and Green Square Train Station (10mins to the City)

More apartments available!

Contact: Carmen Whiteley
02 8588 8888
0497 555 519

Type: Apartment
Date Available: 08/06/2021

Bond: \$3120
<https://www.resbymirvac.com>



Plans shown are only indicative of layout. Dimensions are approximate.

ZETLAND, NSW
903/18 Ebsworth Street