



DOCKLANDS, VIC
2402/70 Lorimer Street

2 BED **2** BATH **2** CAR



Brilliant Balance of Sleek Style and Marvellous Internal Space

An exceptional harmony of sophisticated contemporary elegance and fabulous space, this two bedroom, two bathroom residence in Tower 3 of Yarra's Edge has the magnificent CBD and marina as your daily backdrop!

This flawless abode sits high on the 24th floor and delivers superb detail from stone surfaces, soft carpet and floor-to-ceiling windows. The expansive central living zone has designated lounge and dining spaces, with this airy hub further oozing out to the full-length north/east-facing balcony which displays some of the most spectacular skyline views in all of the Docklands.

A dazzling kitchen is ideal for home gourmands with a long breakfast bar and stainless steel appliances. The master bedroom is an excellent size and includes dual mirrored BIRs and a double vanity ensuite, meanwhile the spacious 2nd bedroom with BIRs is a few steps to the striking central

bathroom. Both bedrooms also have balcony access. Also enjoy a separate laundry, ducted heating and cooling, secure intercom entry, 2 car spaces, storage cage and access to RekDek incl. gym, pool, spa, steam room, and sauna.

Contact Agent

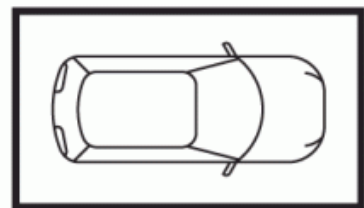
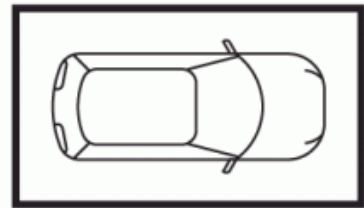
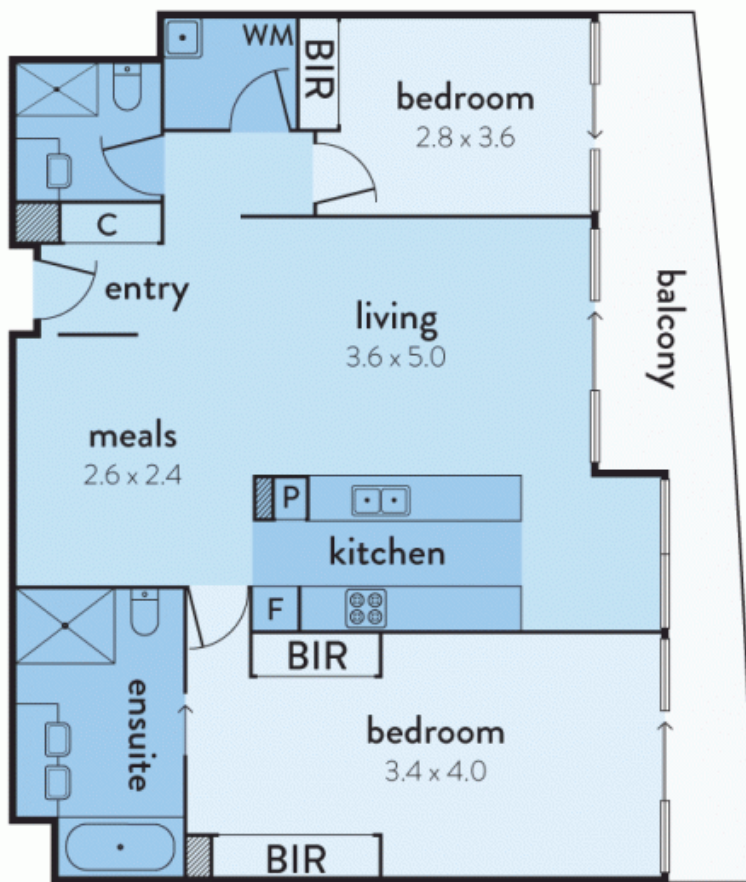
Contact: Baden Lucas
03 9645 1199
0418 888 751

Type: Apartment

Sold Date: 06/01/2018

<https://www.resbymirvac.com>

2402/70 LORIMER STREET DOCKLANDS



carspace
(not in position)



real estate
services
by mirvac

Plans shown are only indicative of layout. Dimensions are approximate.

The above plan is an artist's impression only, it includes elements that are for display purposes and may not be to scale. Dimensions are approximate and every care has been taken to verify the accuracy of details.

DOCKLANDS, VIC
2402/70 Lorimer Street