



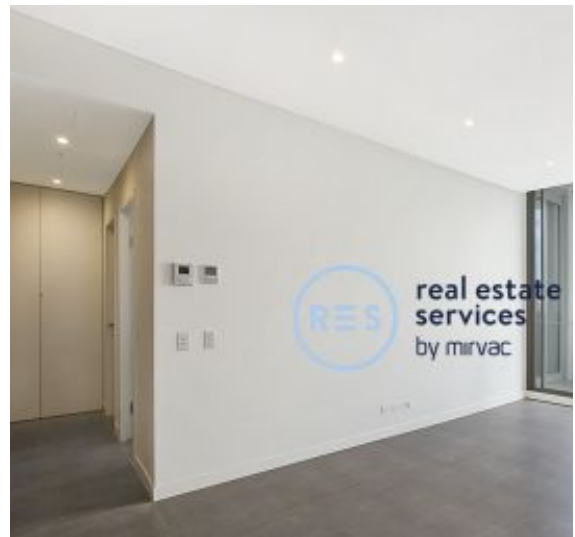
DEPOSIT TAKEN

## More apartments available for lease in Green Square - Zetland!

Please call 0497 555 519 or email [carmen.whiteley@resbymirvac.com](mailto:carmen.whiteley@resbymirvac.com) for more information



GREEN SQUARE



**ZETLAND, NSW**  
306/18 Ebsworth Street

**1**  
BED

**1**  
BATH



### 1-Bed Apartment with Study Room in Zetland

This Modern, 68sqm Apartment features:

- Large bedroom with generous built-in wardrobe
- Tiled living and dining area, leading to sunny balcony
- Contemporary kitchen with stone benchtop and Smeg appliances
- Sleek bathroom with plenty of vanity storage
- Internal laundry with dryer included
- Separate study room, perfect for a home office
- Ducted A/C, video intercom and NBN connectivity
- 300m to Woolworths, The Social Corner and Green Square Train Station (10mins to the City)

**\$550 per week**

**Contact:** Carmen Whiteley  
02 8588 8888  
0497 555 519

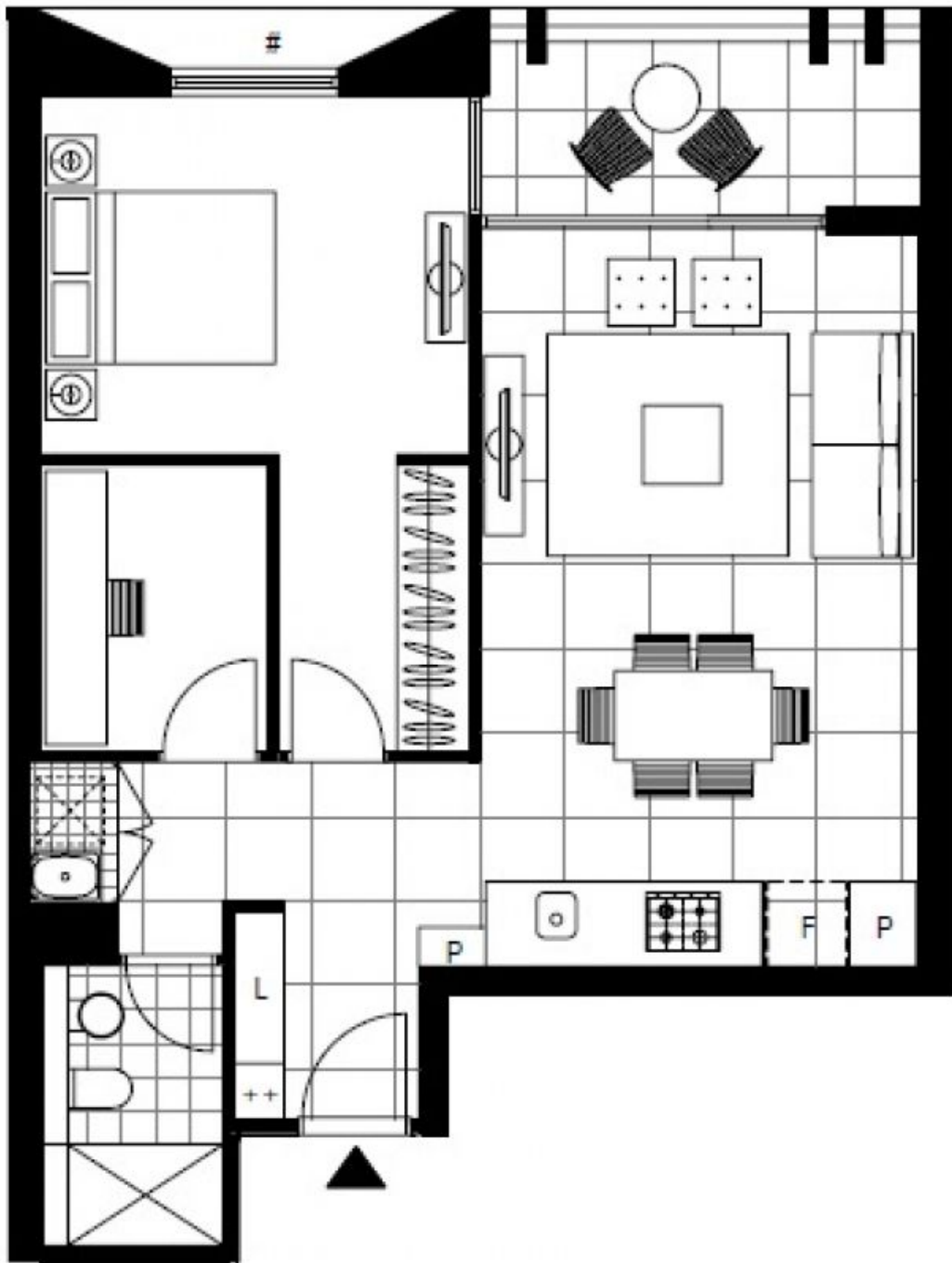
**Type:** Apartment

**Date Available:** 07/08/2020

**Bond:** \$2200

<https://www.resbymirvac.com>

For more information please contact Real Estate Services by Mirvac on 02 8588 8888 or email [enquiries@resbymirvac.com](mailto:enquiries@resbymirvac.com) - Your Onsite Agent!



Plans shown are only indicative of layout. Dimensions are approximate.

**ZETLAND, NSW**  
306/18 Ebsworth Street