



## GLEBE, NSW

3506/21 Scotsman Street

**1**  
BED

**1**  
BATH



**Deposit taken- More apartments available- Call Harry**  
**0401 545 440**

This 58sqm, 5th floor Apartment has to offer:

- Large bedroom with generous built-in wardrobe
- Open-plan living and dining area, leading to the balcony
- Contemporary kitchen with stone benchtop and Miele appliances
- Sleek bathroom with plenty of storage
- Generous balcony, perfect for entertaining
- Internal laundry with washing machine and dryer included
- Secure storage cage included
- Ducted A/C, video intercom and NBN connectivity
- 400m to the Heritage-listed Tramsheds, light rail station and public transport

**DEPOSIT TAKEN !**

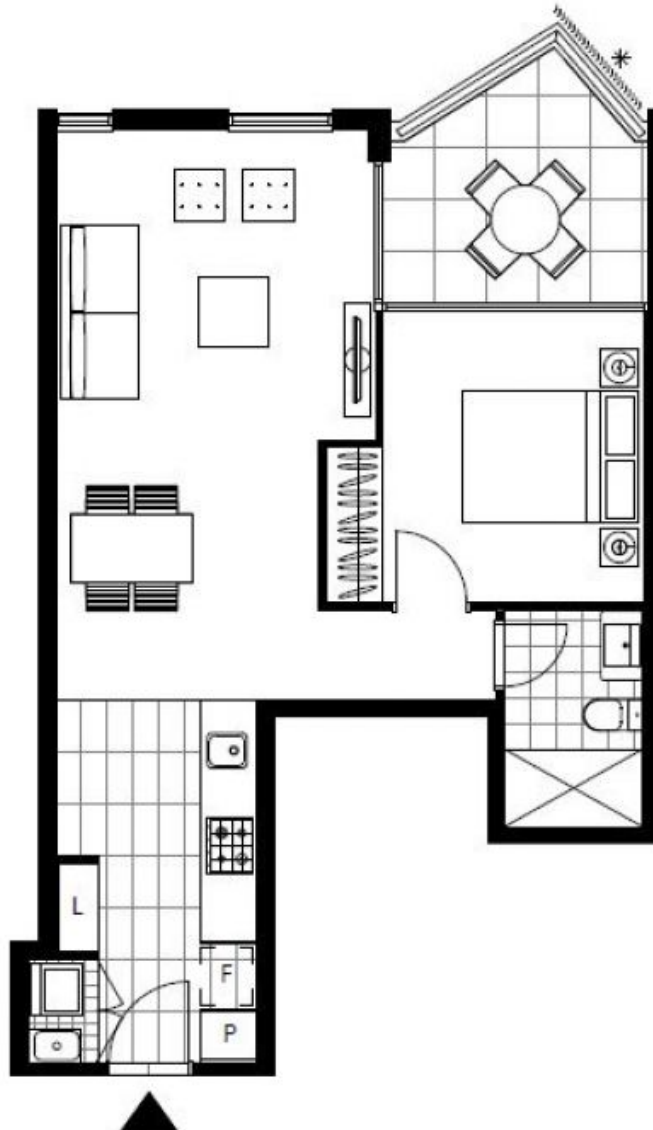
**Contact:** Naz Sabzpouri  
02 8588 8888  
0401 545 440

**Type:** Apartment

**Date Available:** 03/12/2020

**Bond:** \$2000

<https://www.resbymirvac.com>



Plans shown are only indicative of layout. Dimensions are approximate.

**GLEBE, NSW**  
3506/21 Scotsman Street