



ZETLAND, NSW

605/18 Ebsworth Street

2 **2** **1** 
BED BATH CAR

Bright 2-Bedroom Apartment with Parking in Zetland

This 89sqm, 6th floor Apartment features:

- Well appointed bedrooms with built-in wardrobes
- Open-plan living and dining area with integrated TV unit
- Contemporary kitchen with stone benchtops and Smeg appliances
- Ultramodern bathrooms with generous storage
- Internal laundry with dryer included
- Secure car space and storage cage included
- Ducted A/C, video intercom and NBN connectivity
- 300m to Woolworths, The Social Corner and Green Square Train Station (10mins to the City)

DEPOSIT TAKEN

Contact: Carmen Whiteley
02 8588 8888
0497 555 519

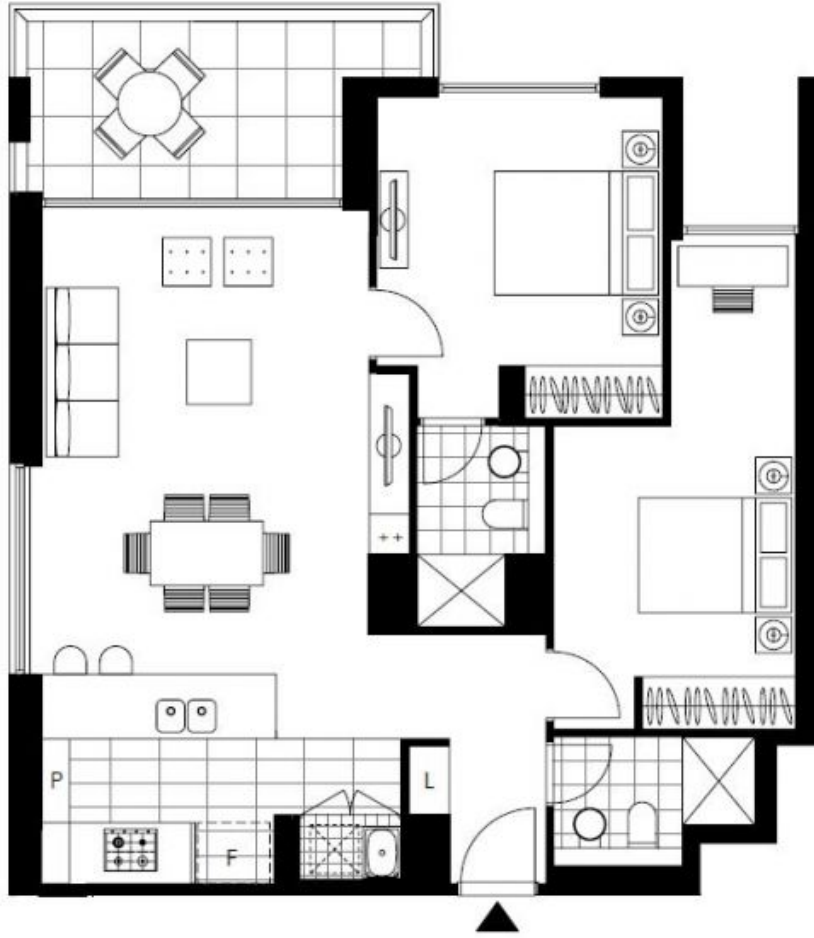
Type: Apartment

Date Available: 14/12/2019

Bond: \$3080

<https://www.resbymirvac.com>

For more information please contact Real Estate Services by Mirvac on 02 8588 8888 or email enquiries@resbymirvac.com - Your Onsite Agent!



Plans shown are only indicative of layout. Dimensions are approximate.

ZETLAND, NSW
605/18 Ebsworth Street