



## ZETLAND, NSW

605/18 Ebsworth Street

**2** **2** **1**   
BED BATH CAR

### Bright 2-Bedroom Apartment with Parking in Zetland

This 89sqm, 6th floor Apartment features:

- Well appointed bedrooms with built-in wardrobes
- Open-plan living and dining area with integrated TV unit
- Contemporary kitchen with stone benchtops and Smeg appliances
- Ultramodern bathrooms with generous storage
- Internal laundry with dryer included
- Secure car space and storage cage included
- Ducted A/C, video intercom and NBN connectivity
- 300m to Woolworths, The Social Corner and Green Square Train Station (10mins to the City)

### DEPOSIT TAKEN

**Contact:** Carmen Whiteley  
02 8588 8888  
0497 555 519

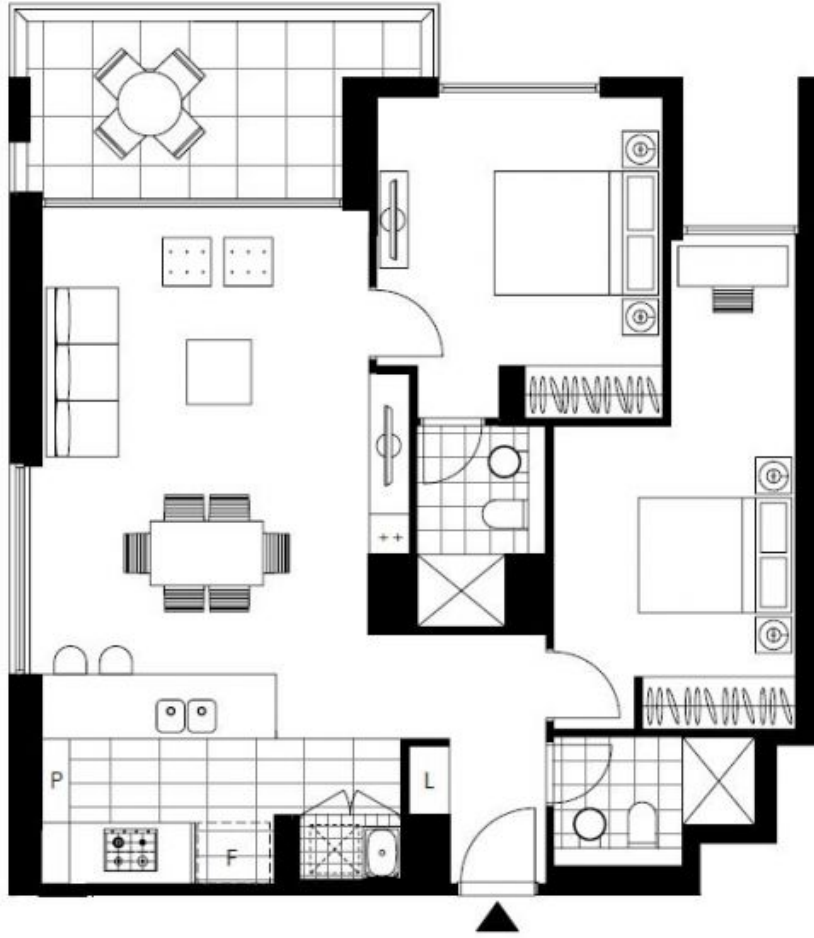
**Type:** Apartment

**Date Available:** 14/12/2019

**Bond:** \$3080

<https://www.resbymirvac.com>

For more information please contact Real Estate Services by Mirvac on 02 8588 8888 or email [enquiries@resbymirvac.com](mailto:enquiries@resbymirvac.com) - Your Onsite Agent!



Plans shown are only indicative of layout. Dimensions are approximate.

**ZETLAND, NSW**  
605/18 Ebsworth Street