



**BONDI, NSW**  
6505/32 Wellington Street

**2** BED **1** BATH **1** CAR 

### Luxury 2-Bedroom Apartment in 'The Moreton', Bondi

This Level 5, Premium Apartment features;

- Well-appointed bedrooms with generous built-in wardrobes
- Open-plan and tiled living/dining area, great for entertaining
- Contemporary kitchen with stone benchtops and Miele appliances
- Stylish bathroom with plenty of vanity storage
- Sunny balcony, with access from master bedroom and living room
- Internal laundry with dryer included
- Secure car space and storage cage included
- Ducted A/C, video intercom and NBN connectivity
- 1.5km walk to the iconic Bondi Beach, 300m to public transport

### DEPOSIT TAKEN - More apartments coming soon!

**Contact:** Carmen Whiteley  
02 8588 8888  
0497 555 519

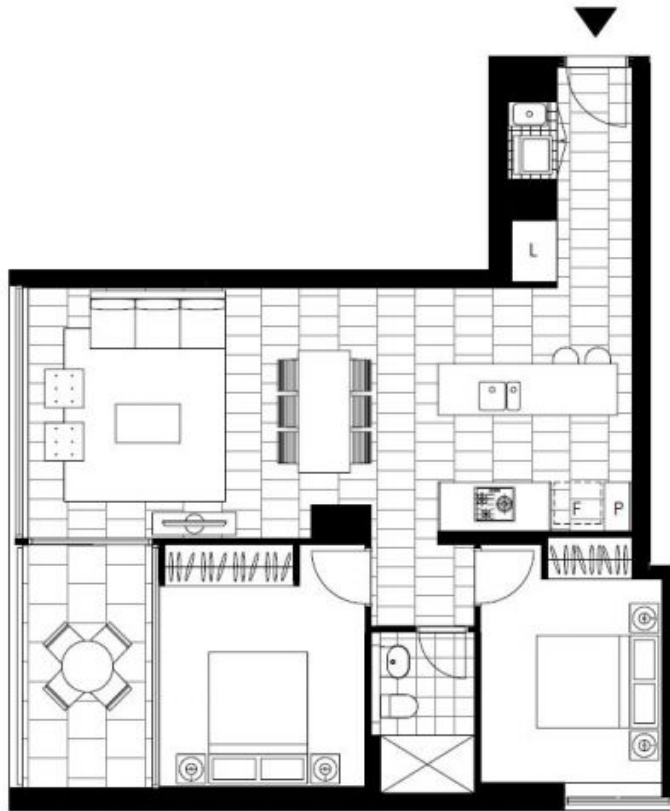
**Type:** Apartment

**Date Available:** 27/01/2021

**Bond:** \$4000

<https://www.resbymirvac.com>

For more information, please contact Real Estate Services by Mirvac on 02 8588 8888 or email [enquiries@resbymirvac.com](mailto:enquiries@resbymirvac.com)



Plans shown are only indicative of layout. Dimensions are approximate.

**BONDI, NSW**  
6505/32 Wellington Street