



BONDI, NSW
6203/32 Wellington Street

2 BED **2** BATH **1** CAR 

DEPOSIT TAKEN - INSPECTION CANCELLED

This level 2, 86sqm East facing apartment features;

- Stone bench top kitchen with Miele appliances
- Large split bedrooms with built in wardrobes
- Private balcony with access from master and living
- Internal laundry, with Miele washer and dryer included
- Sleek stone bathroom with modern features
- Secure basement car space
- 1.5km from Bondi Beach and close to local schools, public transport and other amenities

1050

Contact:

Georgia Glynn
02 8588 8888
0481 388 777
Carmen Whiteley
02 8588 8888
0497 555 519

Type:

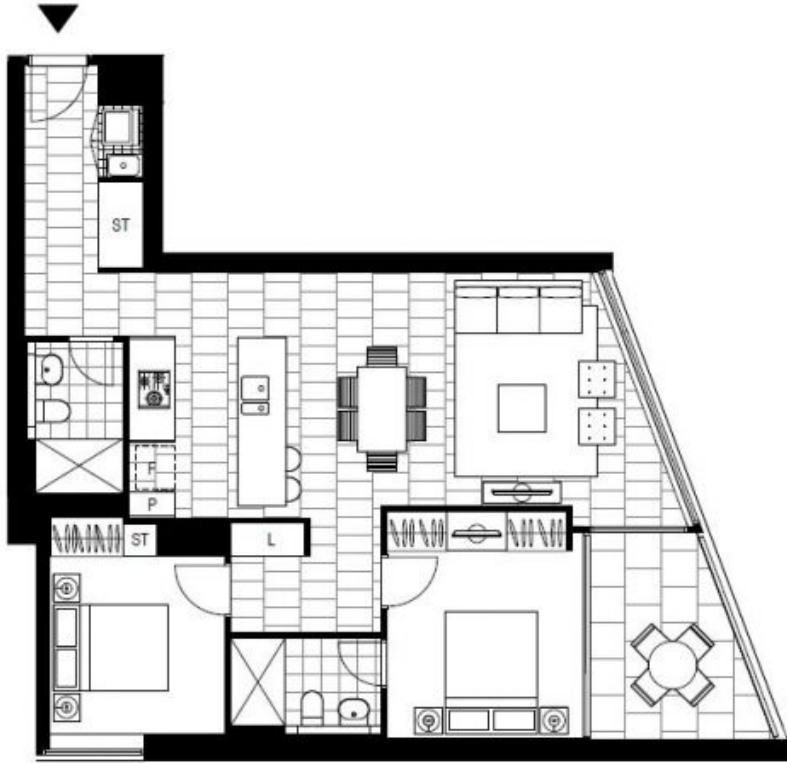
Apartment

Date Available: 04/03/2017

Bond: \$4200

<https://www.resbymirvac.com>

Contact our leasing team on 02 8588 8888 or email chloe.elliott@resbymirvac.com today to book your private inspection!



LEVEL 2

Plans shown are only indicative of layout. Dimensions are approximate.

BONDI, NSW
6203/32 Wellington Street