



BONDI, NSW

6409/32 Wellington Street

2 BED **2** BATH **1** CAR 

Modern East Facing 2-Bedroom Apartment in Bondi

This 85sqm, 4th floor Apartment features:

- Large bedrooms with generous built-in wardrobes
- Open-plan, tiled living and dining area
- Stylish kitchen with stone benchtops and Miele appliances
- Sleek bathrooms with plenty of storage
- Sunny, East-facing balcony with partial ocean views
- Internal laundry with Miele washer and dryer included
- Secure car space and storage cage included
- Ducted A/C, video intercom and NBN connectivity
- 1.5km walk to the iconic Bondi Beach, 300m to public transport

DEPOSIT TAKEN

Contact: Carmen Whiteley
02 8588 8888
0497 555 519

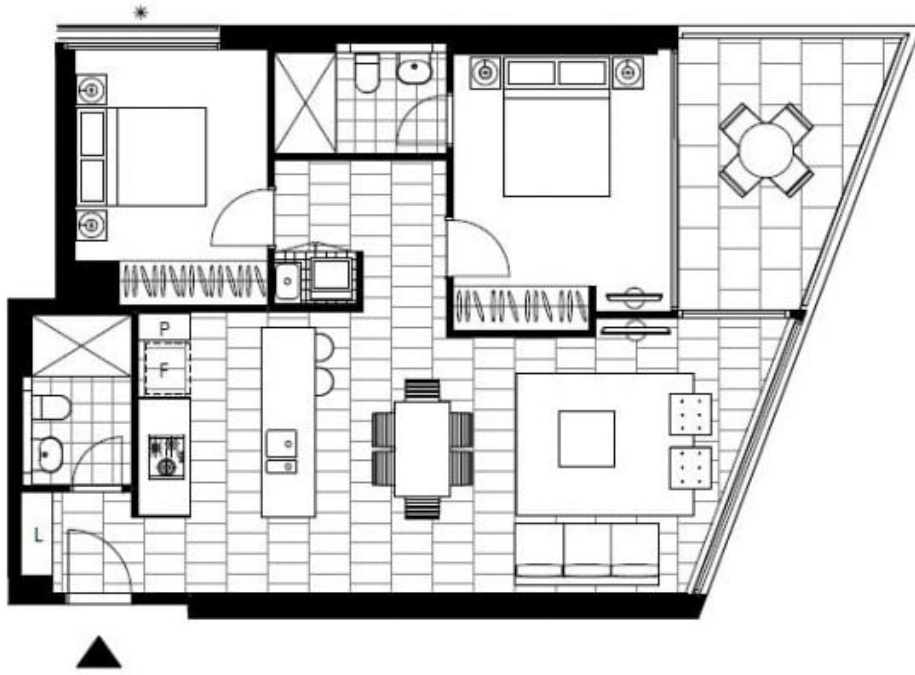
Type: Apartment

Date Available: 13/08/2019

Bond: \$3800

<https://www.resbymirvac.com>

For more information, please contact Real Estate Services by Mirvac on 02 8588 8888 or email enquiries@resbymirvac.com



Plans shown are only indicative of layout. Dimensions are approximate.

BONDI, NSW
6409/32 Wellington Street